

APP CRS	Rwy Ldg	5000
095°	TDZE	882
	Apt Elev	882

RNAV (GPS) RWY 9

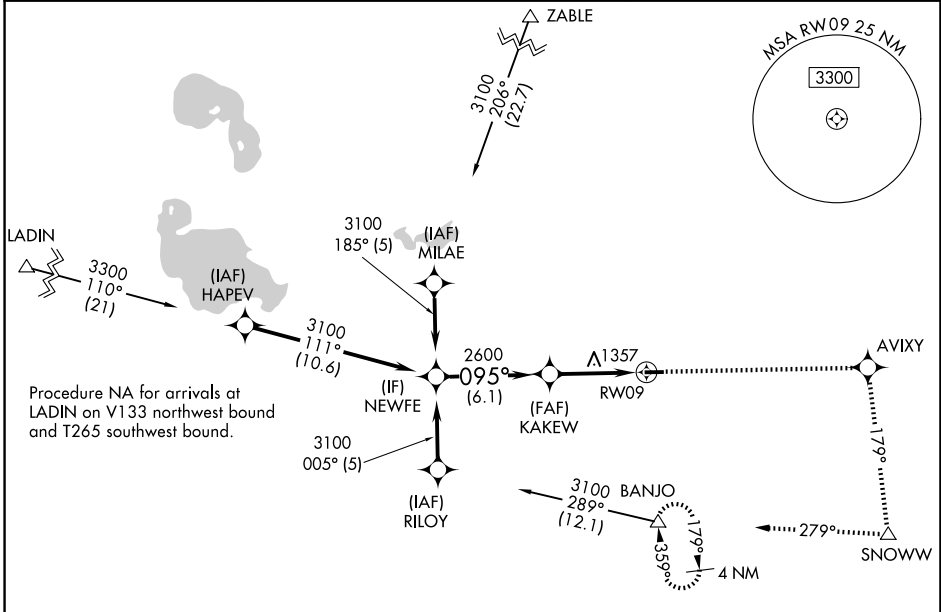
WEST BRANCH COMMUNITY (Y31)

RNP APCH - GPS.

▼ Rwy 9 helicopter visibility reduction below 1 SM NA. When local altimeter setting not received, use MBS Intl altimeter setting and increase all MDA 140 feet, increase LNAV Cat A visibility ¼ mile and Cat C/D ½ mile, increase Circling Cat A visibility ¼ mile and Cat C/D ½ mile. Straight-in Rwy 9 NA at night, Circling Rwy 9 NA at night.

▲ MISSED APPROACH: Climb to 4000 direct AVIXY and via track 179° to SNOWW and via track 279° to BANJO and hold.

AWOS-3P 119.575	MINNEAPOLIS CENTER 125.475 269.45	UNICOM 122.8 (CTAF) 📻
---------------------------	---	---------------------------------

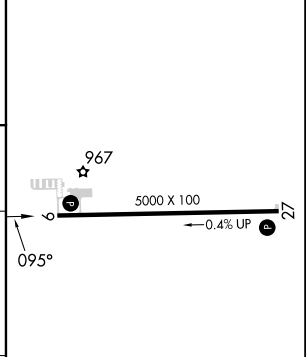
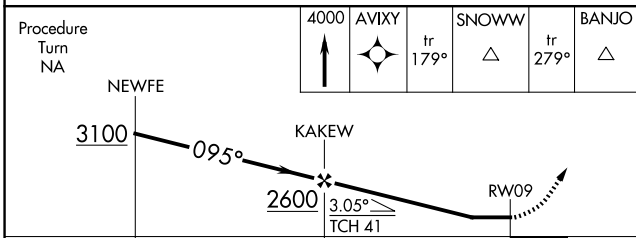


EC-1, 14 MAY 2026 to 11 JUN 2026

EC-1, 14 MAY 2026 to 11 JUN 2026

ELEV 882	TDZE 882
----------	----------

Procedure Turn NA	4000	AVIXY	SNOWW	BANJO
	↑	✧	tr 179°	tr 279°



CATEGORY	A	B	C	D
LNAV MDA	1660-1 778 (800-1)	1660-1¼ 778 (800-1¼)	1660-2¼ 778 (800-2¼)	1660-2½ 778 (800-2½)
CIRCLING	1660-1 778 (800-1)	1660-1¼ 778 (800-1¼)	1660-2¼ 778 (800-2¼)	1740-2¾ 858 (900-2¾)

REIL Rwys 9 and 27 📻
MIRL Rwy 9-27 📻