

VOR/DME MYV 110.8 Chan 45	APP CRS 338°	Rwy Ldg TDZE N/A N/A Apt Elev 194
---	------------------------	--

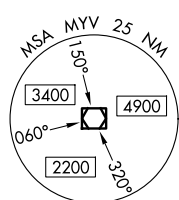
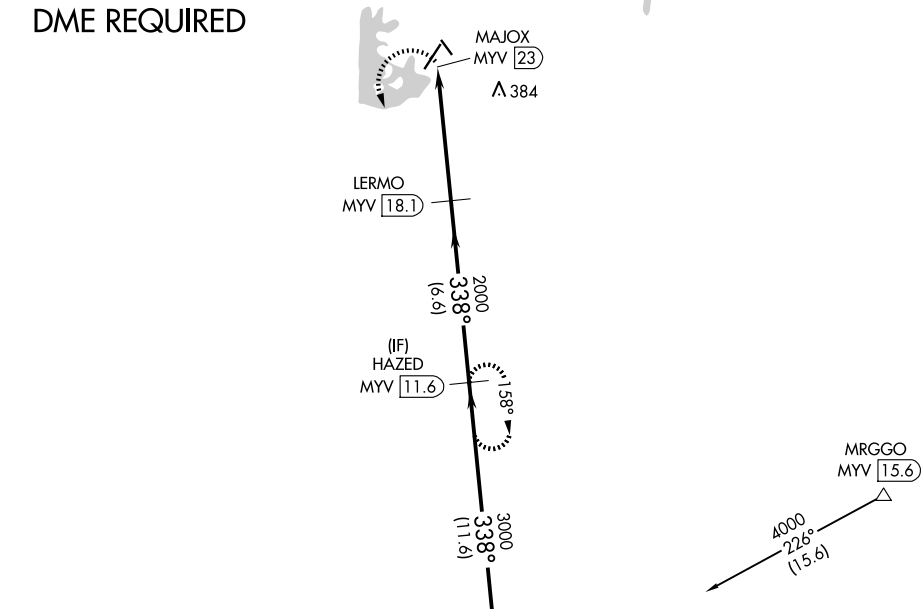
VOR-A
OROVILLE MUNI (OVE)

▼ Circling NA northeast of Rwy 13-31. DME required.

MISSED APPROACH: Climbing left turn to 3000 on MYV
VOR/DME R-338 to HAZED/MYV 11.6 DME and hold.

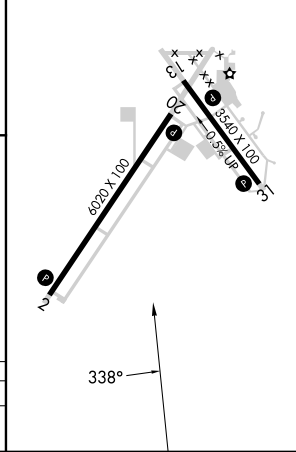
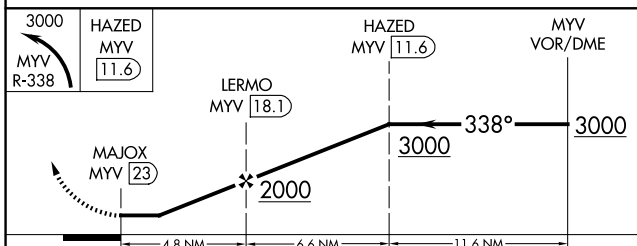
ASOS 121.425	NORCAL APP CON 125.4 259.1	UNICOM 122.8 (CTAF) 0
------------------------	--------------------------------------	---------------------------------

DME REQUIRED



IAF
MARYSVILLE
110.8 MYV
Chan 45

ELEV 194
REIL Rws 2 and 20
HIRL Rws 2-20 and 13-31



CATEGORY	A	B	C	D
CIRCLING	840-1 646 (700-1)		840-1¾ 646 (700-1¾)	840-2 646 (700-2)

SW-2, 14 MAY 2026 to 11 JUN 2026

SW-2, 14 MAY 2026 to 11 JUN 2026