

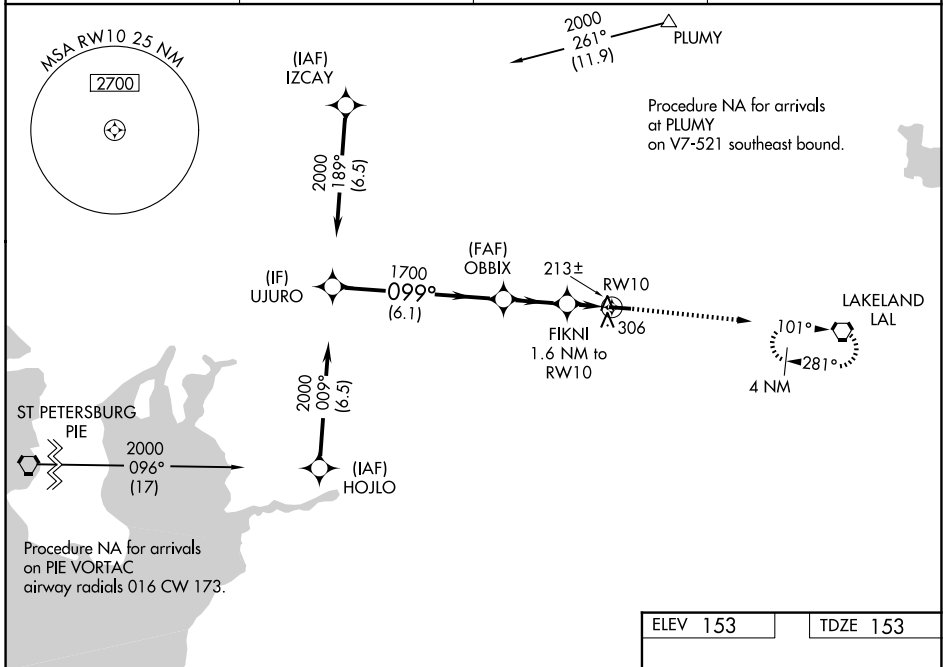
WAAS CH <b>90422</b> <b>W10A</b>	APP CRS <b>099°</b>	Rwy Ldg TDZE <b>153</b> Apt Elev <b>153</b>	<b>3750</b>
--	------------------------	---	-------------

# RNAV (GPS) RWY 10

PLANT CITY (PCM)

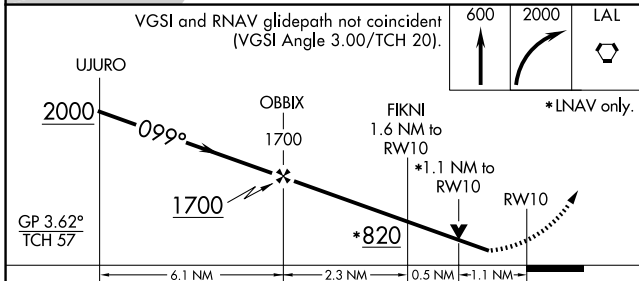
RNP APCH.	<p><b>⚠</b> Circling Rwy 28 NA at night. Baro-VNAV and VDP NA when using Lakeland altimeter setting.  <b>⚠</b> Rwy 10 helicopter visibility reduction below <math>\frac{3}{4}</math> SM NA. For uncompensated Baro-VNAV systems, LNAV/VNAV NA below -15°C or above 54°C. When local altimeter setting not received, use Lakeland altimeter setting and increase all DA/MDA 20 feet.</p>	<p><b>MISSED APPROACH:</b> Climb to 600 then climbing right turn to 2000 direct LAL VORTAC and hold.</p>
-----------	---	--

AWOS-3 <b>120.025</b>	TAMPA APP CON <b>120.65 290.3</b>	CLNC DEL <b>121.725 (GCO)</b>	UNICOM <b>123.05 (CTAF) ①</b>
--------------------------	--------------------------------------	----------------------------------	----------------------------------

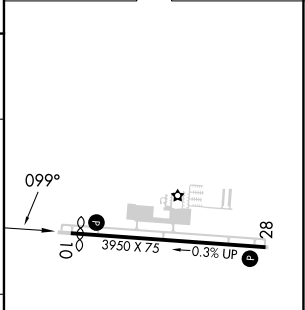


SE-3, 14 MAY 2026 to 11 JUN 2026

SE-3, 14 MAY 2026 to 11 JUN 2026



ELEV 153	TDZE 153
----------	----------



CATEGORY	A	B	C	D
LPV DA	455-1	302 (400-1)		NA
LNAV/VNAV DA	510-1	357 (400-1)		NA
LNAV MDA	520-1	367 (400-1)		NA
CIRCLING	680-1 527 (600-1)	720-1 567 (600-1)		NA

MIRL Rwy 10-28 ①  
REIL Rwy 10 and 28 ①