

WAAS CH <b>78136</b> <b>W28A</b>	APP CRS <b>279°</b>	Rwy Ldg TDZE Apt Elev	<b>3950</b> <b>153</b> <b>153</b>
--	------------------------	-----------------------------	---

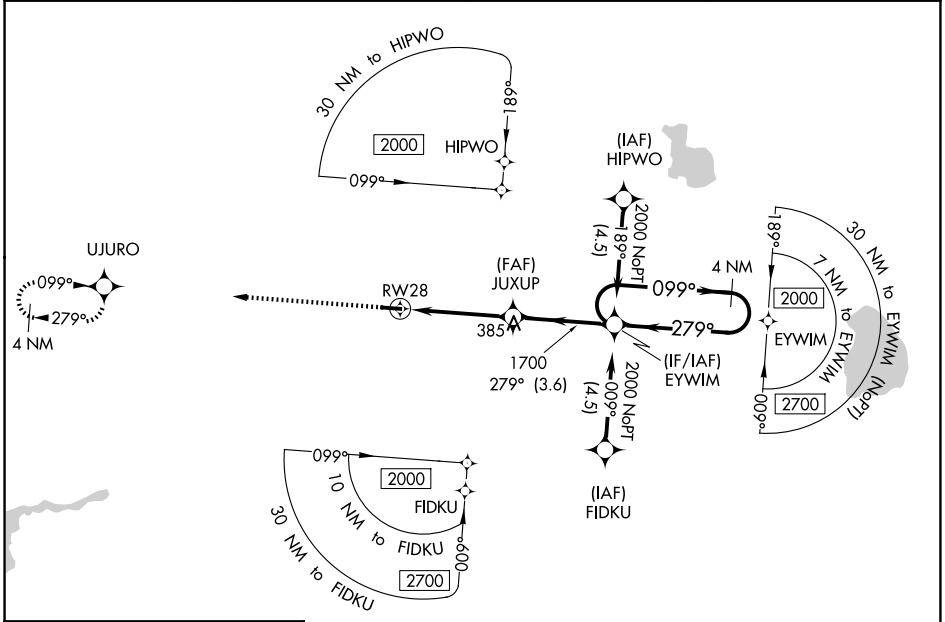
# RNAV (GPS) RWY 28

PLANT CITY (PCM)

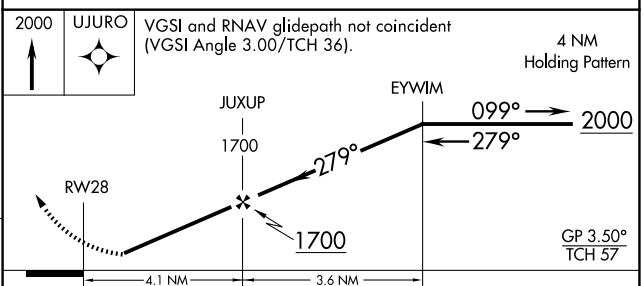
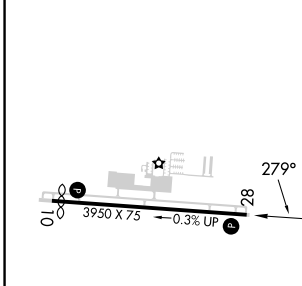
**⚠** Baro-VNAV NA when using Lakeland altimeter setting. For uncompensated Baro-VNAV systems, LNAV/VNAV NA below -1.5°C (5°F) or above 54°C (130°F). DME/DME RNP-0.3 NA. Night landing: Rwy 28 NA. Helicopter visibility reduction below 1 SM NA. When local altimeter setting not received use Lakeland altimeter setting and increase all DA/MDA 20 feet.

**MISSED APPROACH:**  
Climb to 2000 direct UJURO and hold.

AWOS-3 <b>120.025</b>	TAMPA APP CON <b>120.65 290.3</b>	CLNC DEL <b>121.725 (GCO)</b>	UNICOM <b>123.05 (CTAF) 0</b>
--------------------------	--------------------------------------	----------------------------------	----------------------------------



ELEV <b>153</b>	TDZE <b>153</b>
-----------------	-----------------



CATEGORY	A	B	C	D
LPV DA	414-1	261 (300-1)		NA
LNAV/VNAV DA	459-1	306 (400-1)		NA
LNAV MDA	600-1	447 (500-1)		NA
CIRCLING	680-1 527 (600-1)	720-1 567 (600-1)		NA

MIRL Rwy 10-28 **0**  
REIL Rws 10 and 28 **0**

SE-3, 14 MAY 2026 to 11 JUN 2026

SE-3, 14 MAY 2026 to 11 JUN 2026