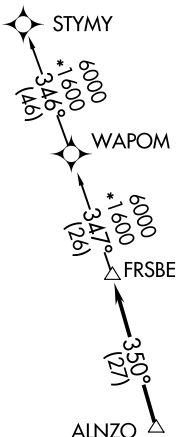


**TOP ALTITUDE:
ASSIGNED BY ATC**

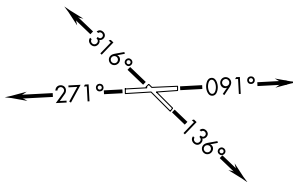
RNAV 1-DME/DME IRU or GPS.

RADAR required.

ATIS
119.85
CLNC DEL
127.95
GND CON
121.75
EXECUTIVE TOWER
120.9 239.3
MIAMI DEP CON
126.05 251.1



TAKEOFF MINIMUMS
Rwys 9, 13, 31: Standard.
Rwy 27: Standard with minimum
climb of 227' per NM to 600.



- NOTE: Jet aircraft only.
- NOTE: Accelerate to 250K, if unable, advise ATC.
- NOTE: WAPOM Transition for KMCO, KDAB, and KMLB area arrivals.

NOTE: Chart not to scale.

DEPARTURE ROUTE DESCRIPTION

TAKEOFF RUNWAY 9: Climb on heading 091° or as assigned by ATC for RADAR vectors to ALNZO, thence...

TAKEOFF RUNWAY 13: Climb on heading 136° or as assigned by ATC for RADAR vectors to ALNZO, thence...

TAKEOFF RUNWAY 27: Climb on heading 271° or as assigned by ATC for RADAR vectors to ALNZO, thence...

TAKEOFF RUNWAY 31: Climb on heading 316° or as assigned by ATC for RADAR vectors to ALNZO, thence...

... on track 350° to FRSBE, then on (transition). Maintatin ATC assigned altitude, expect filed altitude 10 minutes after departure.

STYMY TRANSITION (FRSBE2.STYMY)
WAPOM TRANSITION (FRSBE2.WAPOM)