

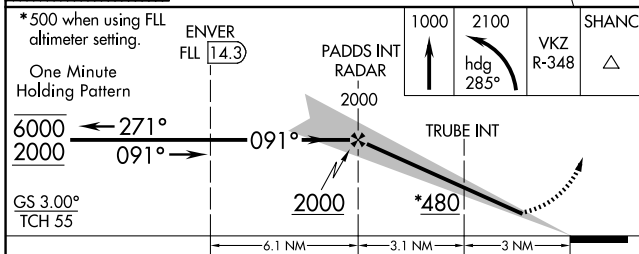
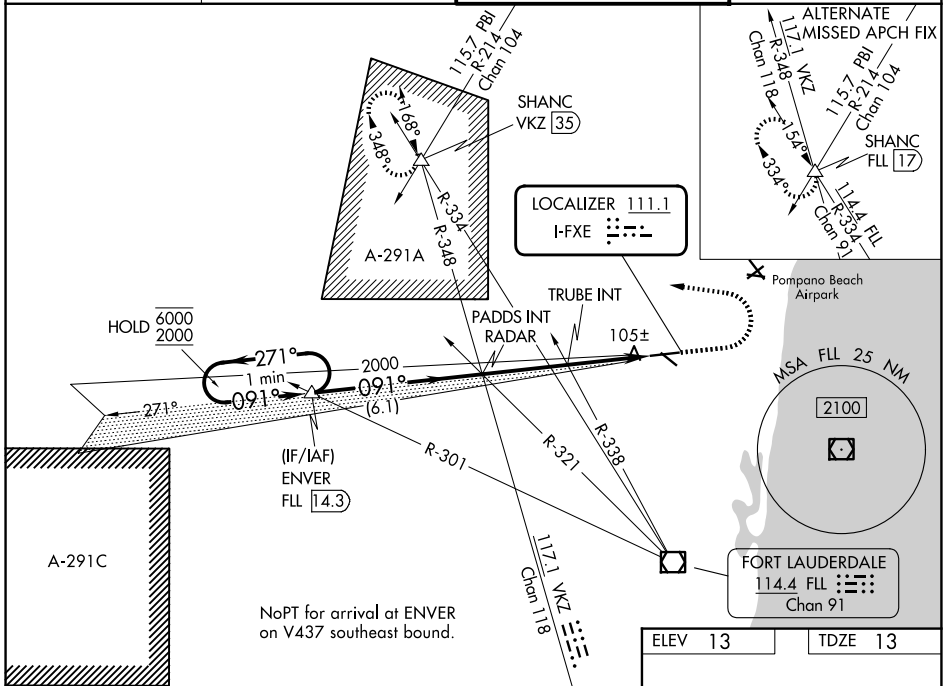
LOC I-FXE <b>111.1</b>	APP CRS <b>091°</b>	Rwy Ldg TDZE Apt Elev	<b>6002</b> <b>13</b> <b>13</b>
---------------------------	------------------------	-----------------------------	---------------------------------------

# ILS or LOC RWY 9

## FORT LAUDERDALE EXEC (FXE)

<p>When local altimeter setting not received, use FLL altimeter setting: increase S-ILS 9 DA to 231 feet; increase all MDAs 20 feet.</p>	<p>MALSR</p>	<p>MISSED APPROACH: Climb to 1000 then climbing left turn to 2100 on heading 285° and on VKZ VOR/DME R-348 to SHANC INT/VKZ 35 DME and hold.</p>
--	--------------	--

ATIS <b>119.85</b>	MIAMI APP CON <b>119.7 306.3</b>	EXECUTIVE TOWER <b>120.9 239.3</b>	GND CON <b>121.75</b>
-----------------------	-------------------------------------	---------------------------------------	--------------------------



ELEV 13	TDZE 13
---------	---------

CATEGORY	A	B	C	D
S-ILS 9	213-½ 200 (200-½)			
S-LOC 9*	480-½ 467 (500-½) 480-1 467 (500-1)			
CIRCLING	520-1	620-1	780-2¼	780-2½
	507 (600-1)	607 (700-1)	767 (800-2¼)	767 (800-2½)
TRUBE FIX MINIMUMS (DUAL VOR RECEIVERS REQUIRED)				
S-LOC 9	360-½ 347 (400-½)		360-¾ 347 (400-¾)	
CIRCLING	520-1	620-1	780-2¼	780-2½
	507 (600-1)	607 (700-1)	767 (800-2¼)	767 (800-2½)

