

(LIFRR2.LIFRR) 24081

AL-5942 (FAA)

FORT LAUDERDALE EXEC (FXE)

FORT LAUDERDALE, FLORIDA

LIFRR TWO DEPARTURE (RNAV)

RNAV 1 - DME/DME/IRU or GPS.

RADAR required for non-GPS equipped aircraft.

BAIRN

WIXED

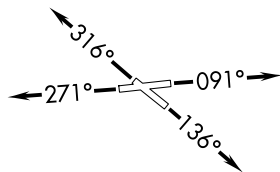
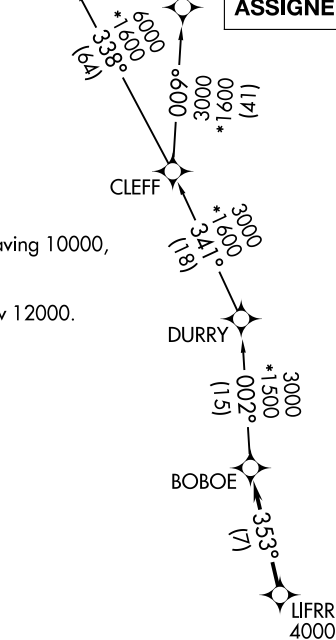
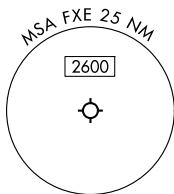
**TOP ALTITUDE:
ASSIGNED BY ATC**

MIAMI DEP CON
126.05 251.1
ATIS
119.85
CLNC DEL
127.95
GND CON
121.75
EXECUTIVE TOWER
120.9 239.3

NOTE: Accelerate to 250K until leaving 10000, if unable, advise ATC.

NOTE: Jet aircraft only.

NOTE: For aircraft filed at or below 12000.



TAKEOFF MINIMUMS

Rwys 9, 13, 31: Standard.

Rwy 27: Standard with minimum climb of 500'/NM to 520.

NOTE: Chart not to scale.



DEPARTURE ROUTE DESCRIPTION

TAKEOFF RUNWAY 9: Climb on heading 091° or as assigned by ATC, thence. . .

TAKEOFF RUNWAY 13: Climb on heading 136° or as assigned by ATC, thence. . .

TAKEOFF RUNWAY 27: Climb on heading 271° or as assigned by ATC, thence. . .

TAKEOFF RUNWAY 31: Climb on heading 316° or as assigned by ATC, thence. . .

. . .for RADAR vector to cross LIFRR at or above 4000, then on track 353° to BOBOE, then on assigned transition, maintain ATC assigned altitude, expect clearance to filed altitude within 10 minutes after departure.

BAIRN TRANSITION (LIFRR2.BAIRN)

WIXED TRANSITION (LIFRR2.WIXED)

LIFRR TWO DEPARTURE (RNAV)

(LIFRR2.LIFRR) 21MAR24

FORT LAUDERDALE, FLORIDA

FORT LAUDERDALE EXEC (FXE)

SE-3, 14 MAY 2026 to 11 JUN 2026