

GUTHRIE, OKLAHOMA

AL-5950 (FAA)

24305

WAAS CH 56607 W34A	APP CRS 338°	Rwy Idg TDZE Apt Elev	5001 1069 1069
--	------------------------	-----------------------------	---

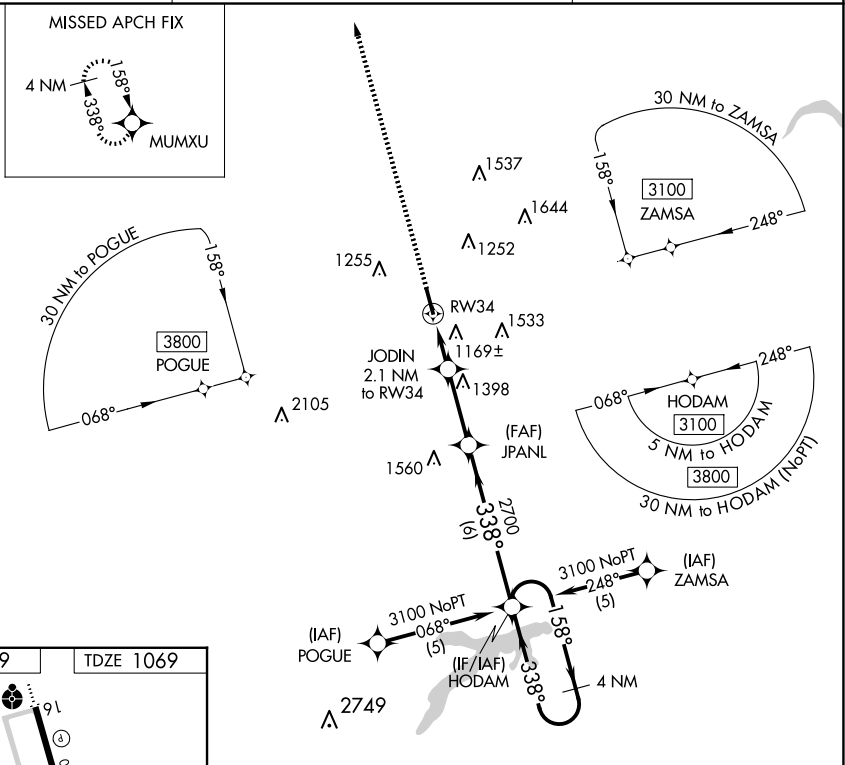
RNAV (GPS) RWY 34

GUTHRIE/EDMOND RGNL (GOK)

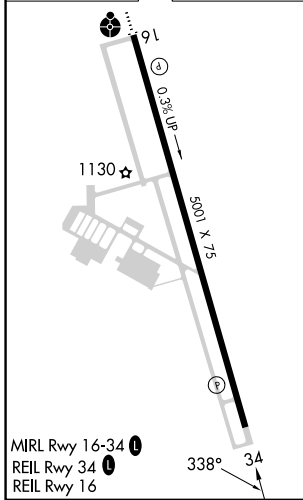
⚠ DME/DME RNP-0.3 NA. VDP NA when using OKC Will Rogers Intl altimeter setting. When local altimeter setting not received, use OKC Will Rogers Intl altimeter setting and increase DA/MDA 100 feet and LPV all Cats visibility 1/4 mile.

⚠ MISSED APPROACH: Climb to 3100 direct MUMXU and hold.

ASOS 133.975	OKE CITY APP CON 124.2 336.4	UNICOM 122.8 (CTAF) 📻
------------------------	--	--



ELEV 1069	TDZE 1069
-----------	-----------



3100	MUMXU	JODIN 2.1 NM to RW34	JAPANL	HODAM	4 NM Holding Pattern
*LNAV only.		*1 NM to RW34			
	RW34	1760*	2700	338°	3100
	1 NM	1.1 NM	2.8 NM	6 NM	
CATEGORY	A	B	C	D	
LPV DA	1319-1	250 (300-1)			NA
LNAV MDA	1420-1	351 (400-1)			NA
CIRCLING	1540-1 471 (500-1)	1560-1 491 (500-1)			NA

GP 3.00°
TCH 45

GUTHRIE, OKLAHOMA
Amdt 1A 16JUN22

35°51'N-97°25'W

GUTHRIE/EDMOND RGNL (GOK)

RNAV (GPS) RWY 34

SC-1, 14 MAY 2026 to 11 JUN 2026

SC-1, 14 MAY 2026 to 11 JUN 2026