

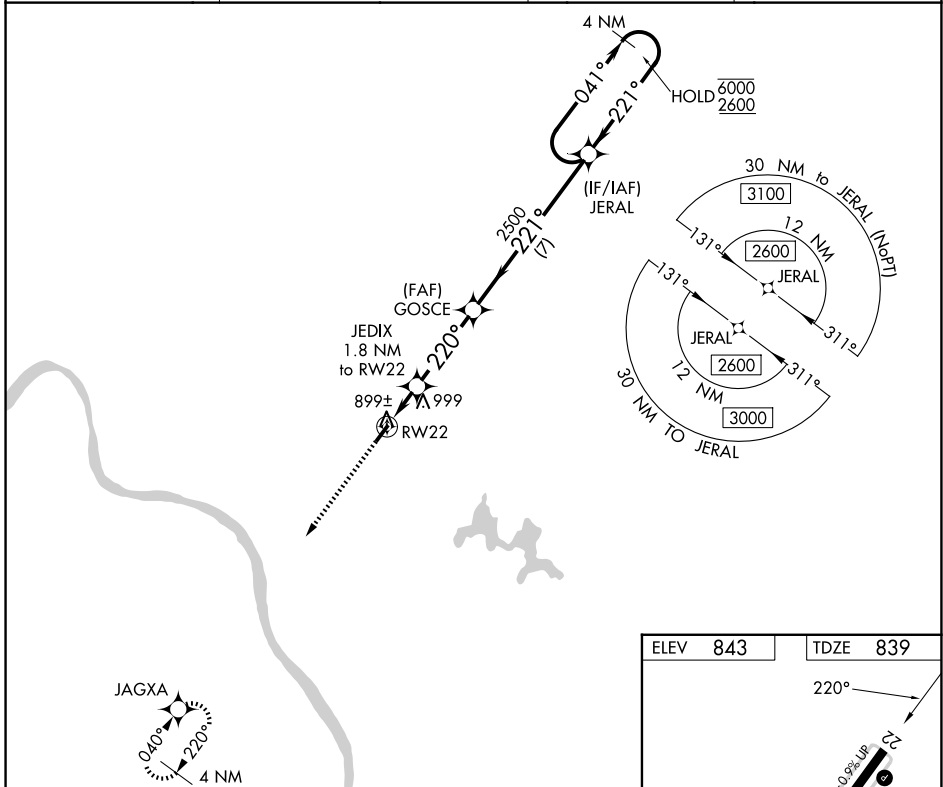
WAAS CH 82227 W22A	APP CRS 220°	Rwy Ldg TDZE Apt Elev	3567 839 843
--	------------------------	-----------------------------	---

RNAV (GPS) RWY 22

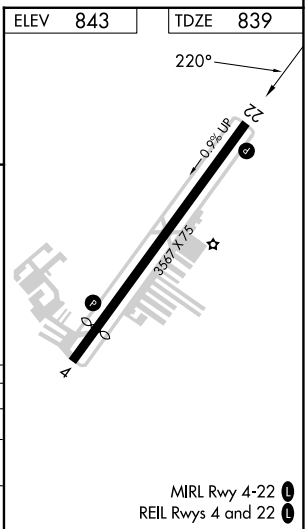
CLERMONT COUNTY (I69)

RNP APCH.	MISSED APPROACH: Climb to 2500 direct JAGXA and hold.
<p>▼ Circling Rwy 4 NA at night.</p> <p>▲ Rwy 22 helicopter visibility reduction below 1 SM NA.</p>	

AWOS-3 127.275	CINCINNATI APP CON 121.0 254.25	CLNC DEL 124.9	UNICOM 122.975 (CTAF) 1
--------------------------	---	--------------------------	--



2500 ↑ JAGXA Visual Segment - Obstacles.	JERAL 4 NM Holding Pattern 041° → 6000 ← 221° 2600		
	GOSCE 221° 2500 7 NM		
JEDIX 1.8 NM to RW22 220° 1420 1.8 3.4 NM			
CATEGORY	A	B	C
LP MDA	1160-1 321 (400-1)		NA
LNAV MDA	1240-1 401 (400-1)	1240-1 1/8 401 (400-1 1/8)	
CIRCLING	1320-1 477 (500-1)	1360-1 517 (600-1)	1520-2 677 (700-2)



EC-2, 14 MAY 2026 to 11 JUN 2026

EC-2, 14 MAY 2026 to 11 JUN 2026