

# RNAV (GPS) RWY 14

GRAYLING AAF (GOV)

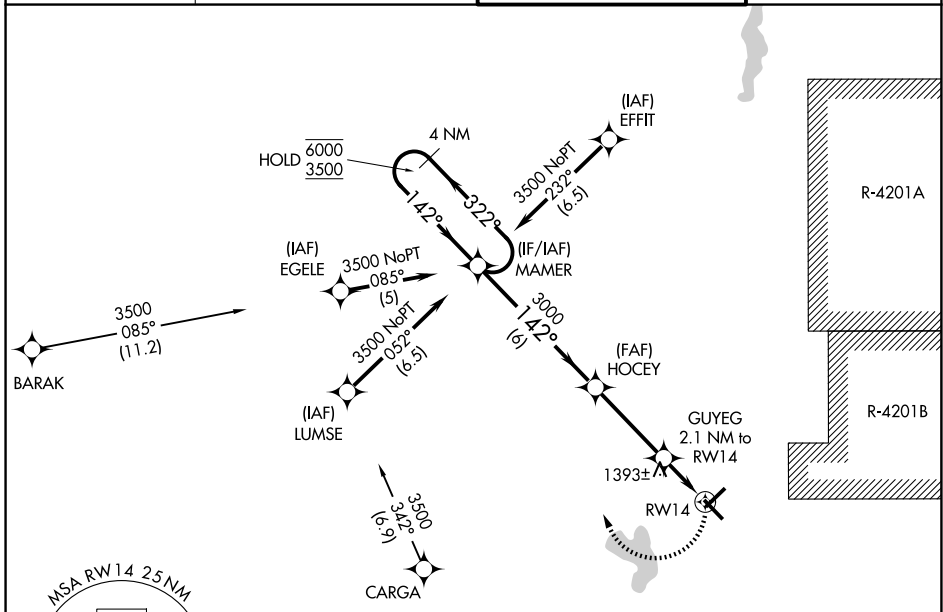
APP CRS	Rwy Ldg	<b>5005</b>
<b>142°</b>	TDZE	<b>1154</b>
	Apt Elev	<b>1158</b>

RNP APCH - GPS

**⚠** VDP NA when using HTL altimeter setting. Circling Rwy 5, 23, 32 NA at night.  
**⚠** Rwy 14 helicopter visibility reduction below 3/4 SM NA. When local altimeter setting not received, use HTL altimeter setting and increase all MDAs 60 feet and LNAV visibility Cat C and D 1/4 SM, and Circling visibility Cat C and D 1/4 SM.

MISSED APPROACH: Climbing right turn to 3500 direct MAMER and hold.

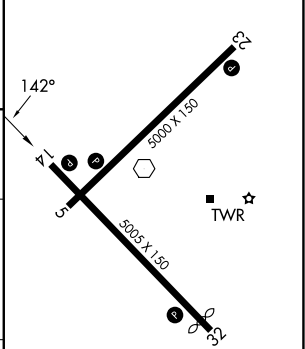
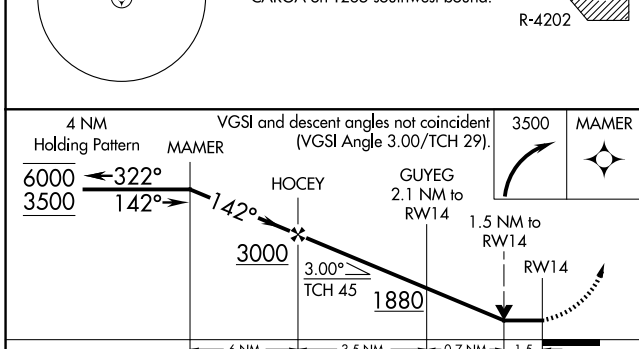
ATIS <b>119.075</b>	MINNEAPOLIS CENTER <b>125.475 269.45</b>	GRAYLING TOWER ★ <b>124.65 (CTAF) 1</b>	GND CON <b>121.9</b>
------------------------	---	--	-------------------------



EC-1, 14 MAY 2026 to 11 JUN 2026

EC-1, 14 MAY 2026 to 11 JUN 2026

ELEV 1158	TDZE 1154
-----------	-----------



CATEGORY	A	B	C	D
LNAV MDA	1660-1	506 (600-1)	1660-1 3/8	506 (600-1 3/8)
CIRCLING	1660-1 502 (600-1)	1720-1 562 (600-1)	1740-1 1/2 582 (600-1 1/2)	1960-2 1/2 802 (900-2 1/2)

REIL Rwy 5, 14, 23, and 32 **1**  
 MRL Rwy 5-23 and 14-32 **1**