

VENICE, FLORIDA

AL-5960 (FAA)

26078

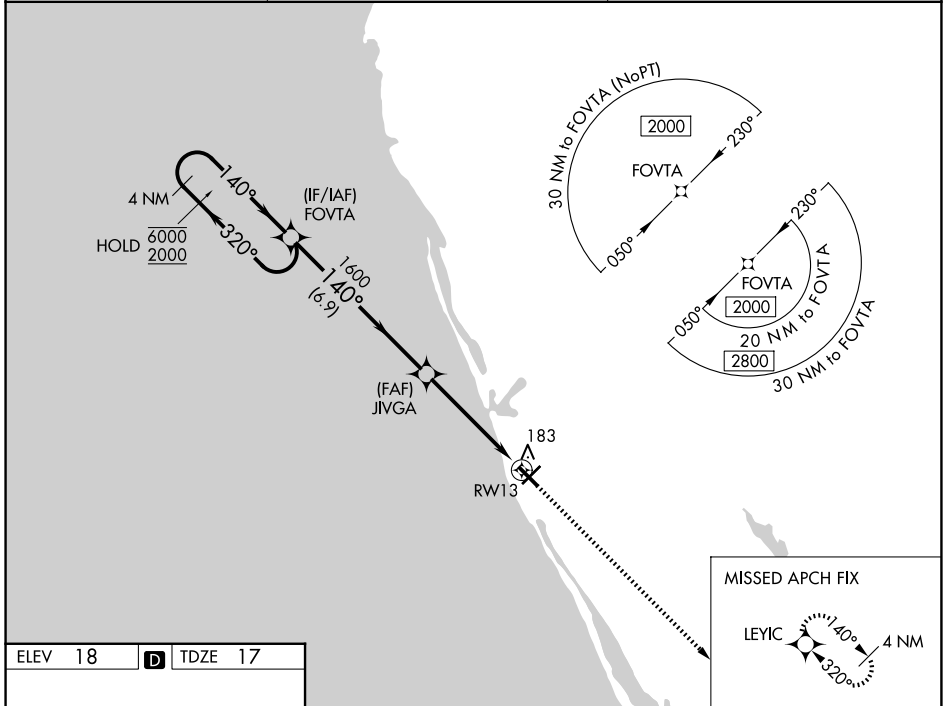
WAAS CH <b>86423</b> <b>W13A</b>	APP CRS <b>140°</b>	Rwy Ldg TDZE Apt Elev	<b>5000</b> <b>17</b> <b>18</b>
--	------------------------	-----------------------------	---------------------------------------

# RNAV (GPS) RWY 13

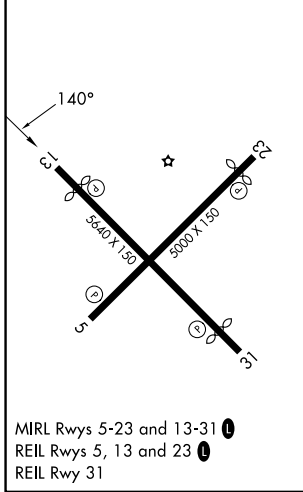
VENICE MUNI (VNC)

RNP APCH - GPS.	MISSED APPROACH: Climb to 2000 direct LEYIC and hold.
-----------------	---

AWOS-3 <b>119.275</b>	TAMPA APP CON <b>119.65 353.575</b>	UNICOM <b>122.725 (CTAF) 0</b>
--------------------------	--	-----------------------------------



ELEV 18	<b>D</b>	TDZE 17
---------	----------	---------



	4 NM Holding Pattern	FOVTA	JIVGA	2000	LEYIC
	6000 ← 320°	140° →	1600	1.3 NM to RWY13	RWY13
	GP 3.00°	TCH 48	1600	6.9 NM	3.5 NM
				1.3 NM	
CATEGORY	A	B	C	D	
LPV DA		267-1	250 (300-1)		
LNAV/VNAV DA		364-1	347 (400-1)		
LNAV MDA	460-1	443 (500-1)	460-1 <sup>3</sup> / <sub>8</sub>	443 (500-1 <sup>3</sup> / <sub>8</sub> )	
CIRCLING	500-1	482 (500-1)	680-1 <sup>3</sup> / <sub>4</sub>	920-3	902 (1000-3)

VENICE, FLORIDA  
Amdt 2A 05OCT23

27°04'N-82°26'W

# VENICE MUNI (VNC)

## RNAV (GPS) RWY 13

SE-3, 14 MAY 2026 to 11 JUN 2026

SE-3, 14 MAY 2026 to 11 JUN 2026