

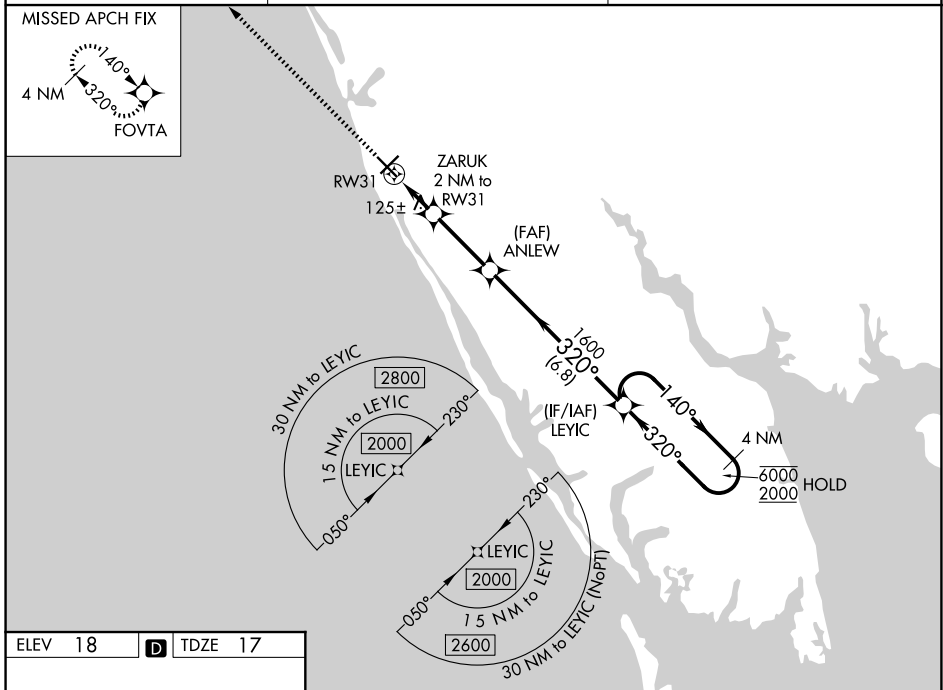
WAAS CH 78223 W31A	APP CRS 320°	Rwy Ldg 5000 TDZE 17 Apt Elev 18
--	------------------------	---

RNAV (GPS) RWY 31

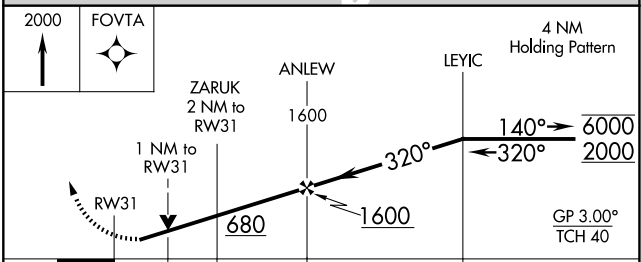
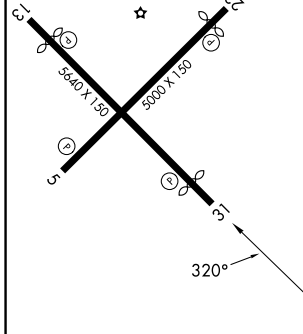
VENICE MUNI (VNC)

RNP APCH - GPS.	MISSED APPROACH: Climb to 2000 direct FOVTA and hold.
-----------------	---

AWOS-3 119.275	TAMPA APP CON 119.65 353.575	UNICOM 122.725 (CTAF) 1
--------------------------	--	-----------------------------------



ELEV 18	D	TDZE 17
---------	----------	---------



CATEGORY	A	B	C	D
LPV DA		267-1	250 (300-1)	
LNAV/VNAV DA		296-1	279 (300-1)	
LNAV MDA		380-1	363 (400-1)	
CIRCLING	500-1	482 (500-1)	680-1 3/4 662 (700-1 3/4)	920-3 902 (1000-3)

MIRL Rwy 5-23 and 13-31 **1**
REIL Rwy 5, 13 and 23 **1**
REIL Rwy 31

SE-3, 14 MAY 2026 to 11 JUN 2026

SE-3, 14 MAY 2026 to 11 JUN 2026