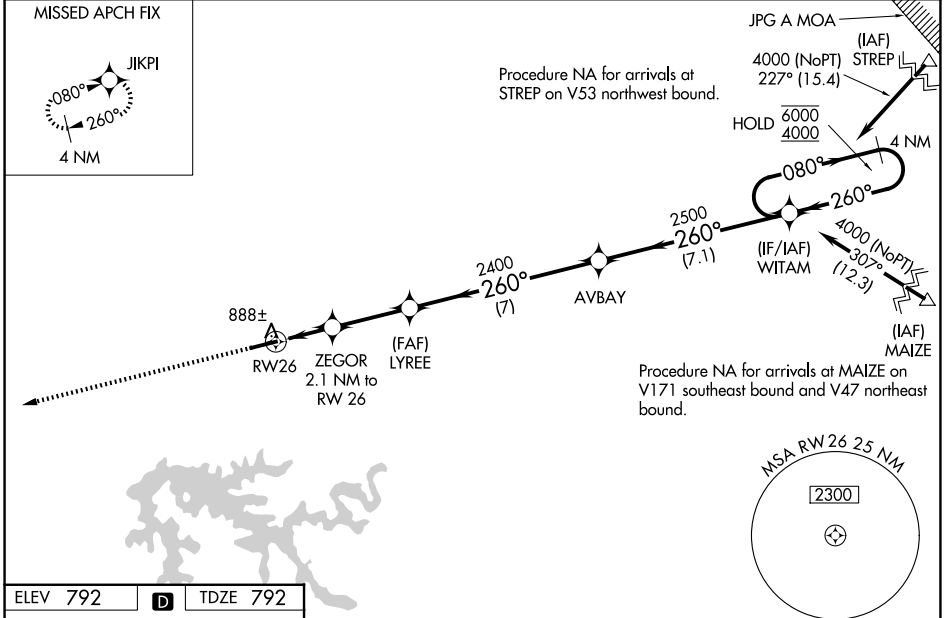


WAAS CH <b>78420</b> W <b>26A</b>	APP CRS <b>260°</b>	Rwy Ldg <b>5298</b> TDZE <b>792</b> Apt Elev <b>792</b>
---	------------------------	---

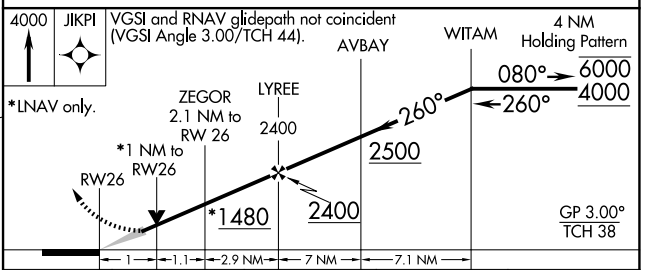
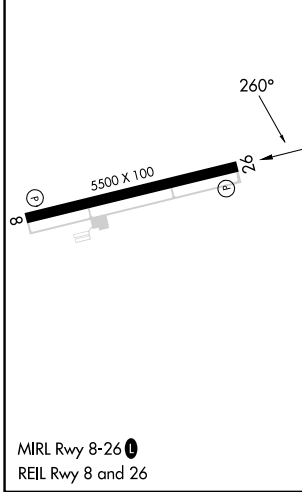
# RNAV (GPS) RWY 26

FRENCH LICK MUNI (F.R.H)

<b>RNP APCH.</b> <p>For uncompensated Baro-VNAV systems, LNAV/VNAV NA below -16°C or above 39°C.</p>		<b>MISSED APPROACH:</b> Climb to 4000 direct JIKPI and hold.
AWOS-3 <b>118.075</b>	LOUISVILLE APP CON <b>123.675 327.0</b>	UNICOM <b>122.8 (CTAF) 0</b>



ELEV 792		TDZE 792
----------	--	----------



CATEGORY	A	B	C	D
LPV DA		1042-1	250 (300-1)	
LNAV/VNAV DA		1077-1	285 (300-1)	
LNAV MDA		1140-1	348 (400-1)	
CIRCLING	1280-1	488 (500-1)	1480-2 688 (700-2)	1480-2¼ 688 (700-2¼)

EC-2, 14 MAY 2026 to 11 JUN 2026

EC-2, 14 MAY 2026 to 11 JUN 2026