

VORTAC RIC <b>114.1</b> Chan <b>88</b>	APP CRS <b>165°</b>	Rwy Ldg TDZE Apt Elev <b>5402</b> <b>207</b> <b>207</b>
----------------------------------------------	------------------------	------------------------------------------------------------------------

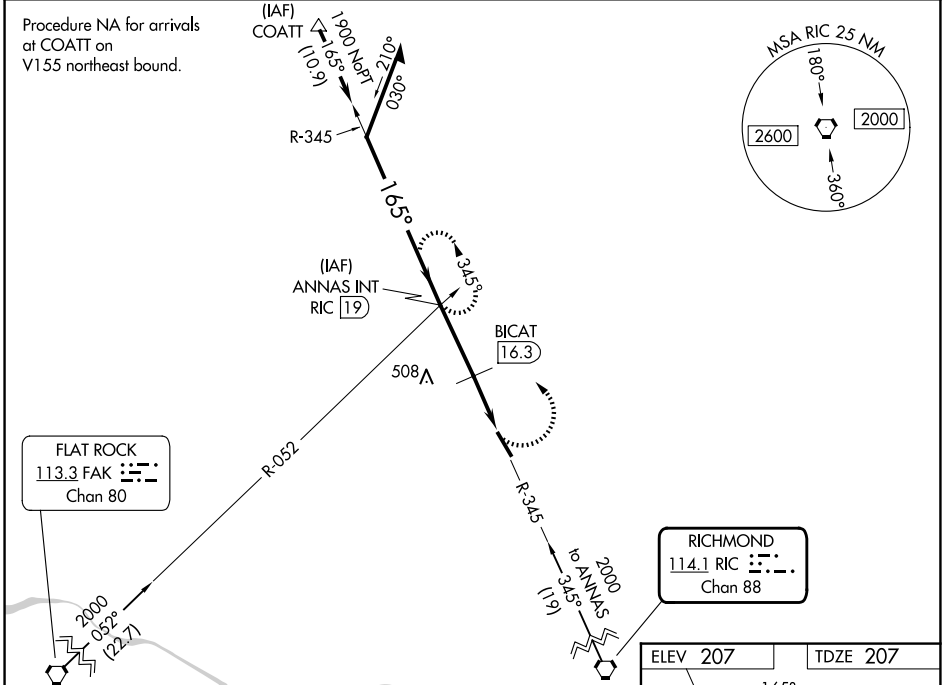
# VOR RWY 16

HANOVER COUNTY MUNI (OFP)

**⚠** When local altimeter setting not received, use Richmond Intl altimeter setting and increase all MDA 40 feet. Rwy 16 helicopter visibility reduction below 3/4 SM NA.

**⚠** MISSED APPROACH: Climbing left turn to 2000 via RIC R-345 to ANNAS INT/19 DME and hold.

ASOS <b>119.025</b>	POTOMAC APP CON (001°-185°) <b>126.4 307.2</b> (186°-360°) <b>126.75 307.2</b>	CLNC DEL <b>125.4</b>	UNICOM <b>122.7</b> (CTAF) <b>Ⓛ</b>
------------------------	--------------------------------------------------------------------------------------	--------------------------	----------------------------------------



Remain within 10 NM

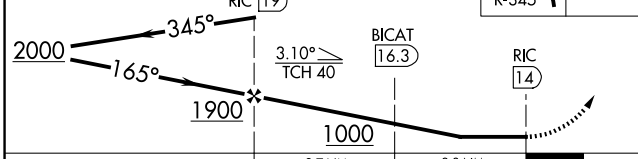
VGSI and descent angles not coincident (VGSI Angle 3.00/TCH 40).

ANNAS INT RIC (19)

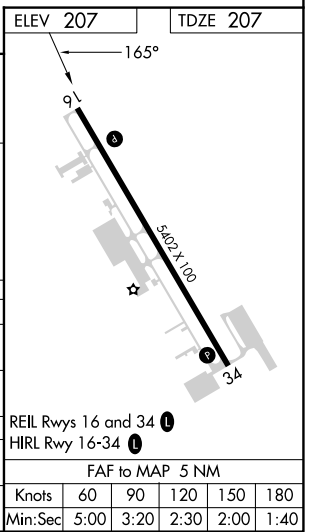
BICAT (16.3)

RIC (14)

2000 RIC R-345 ANNAS INT



CATEGORY	A	B	C	D
S-16	1000-1 793 (800-1)	1000-1¼ 793 (800-1¼)	1000-2¼ 793 (800-2¼)	1000-2½ 793 (800-2½)
CIRCLING	1000-1 793 (800-1)	1000-1¼ 793 (800-1¼)	1000-2¼ 793 (800-2¼)	1020-2¾ 813 (900-2¾)
<b>BICAT FIX MINIMUMS (DME REQUIRED)</b>				
S-16	820-1	613 (700-1)	820-1¾	613 (700-1¾)
CIRCLING	820-1	613 (700-1)	900-2 693 (700-2)	1020-2¾ 813 (900-2¾)



NE-3, 14 MAY 2026 to 11 JUN 2026

NE-3, 14 MAY 2026 to 11 JUN 2026