

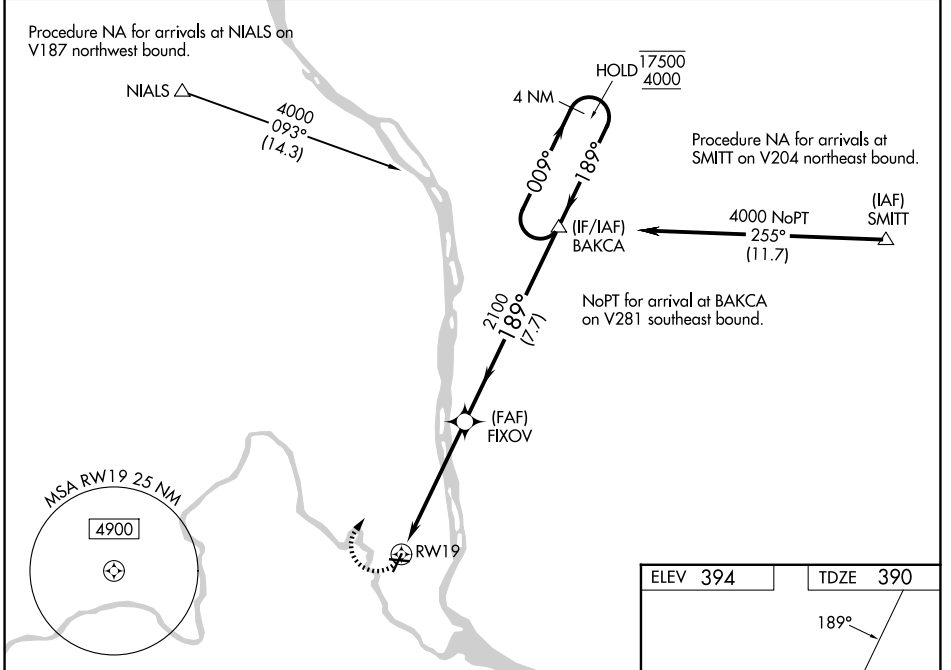
APP CRS	Rwy Ldg	4009
189°	TDZE	390
	Apt Elev	394

RNAV (GPS) Y RWY 19

RICHLAND (R.LD)

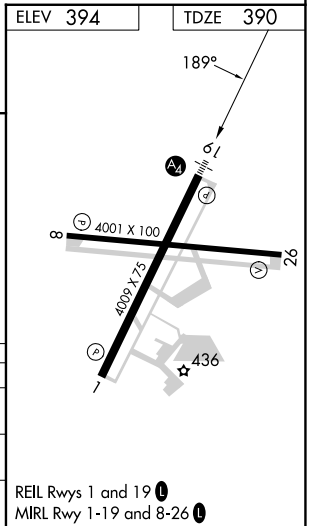
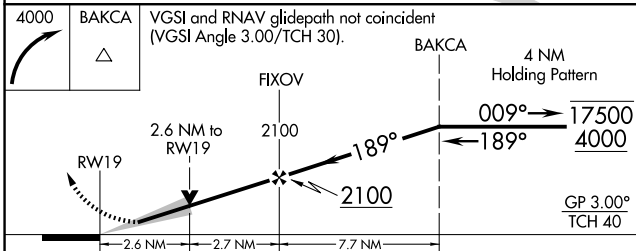
RNP APCH - GPS.	<p>MALS</p>	<p>MISSED APPROACH: Climbing right turn 4000 direct BAKCA and hold, continue climb-in-hold to 4000.</p>
<p>▼ For uncompensated Baro-VNAV systems, LNAV/VNAV NA below -12°C or above 54°C. Baro-VNAV and VDP NA when using PSC altimeter setting. When local altimeter setting not received, use PSC altimeter setting and increase LNAV/VNAV DA to 814 feet; increase all MDAs 20 feet and LNAV visibility Cat C/D ½ SM. For inop ALS increase LNAV/VNAV visibility all Cats to 1½ and LNAV Cat C and D visibility to 2½ SM.</p>		

AWOS-3PT 132.675	SPOKANE APP CON * 128.75 377.2	CLNC DEL 122.4	UNICOM 122.7 (CTAF)
----------------------------	--	--------------------------	-------------------------------



NW-1, 14 MAY 2026 to 11 JUN 2026

NW-1, 14 MAY 2026 to 11 JUN 2026



CATEGORY	A	B	C	D
LNAV/VNAV DA	794-1 404 (400-1)			
LNAV MDA	1240-7/8 850 (900-7/8)	1240-1 850 (900-1)	1240-2	850 (900-2)
CIRCLING	1240-1¼	846 (900-1¼)	1240-2½ 846 (900-2½)	1960-3 1566 (1600-3)

REIL Rwy 1 and 19
MIRL Rwy 1-19 and 8-26