

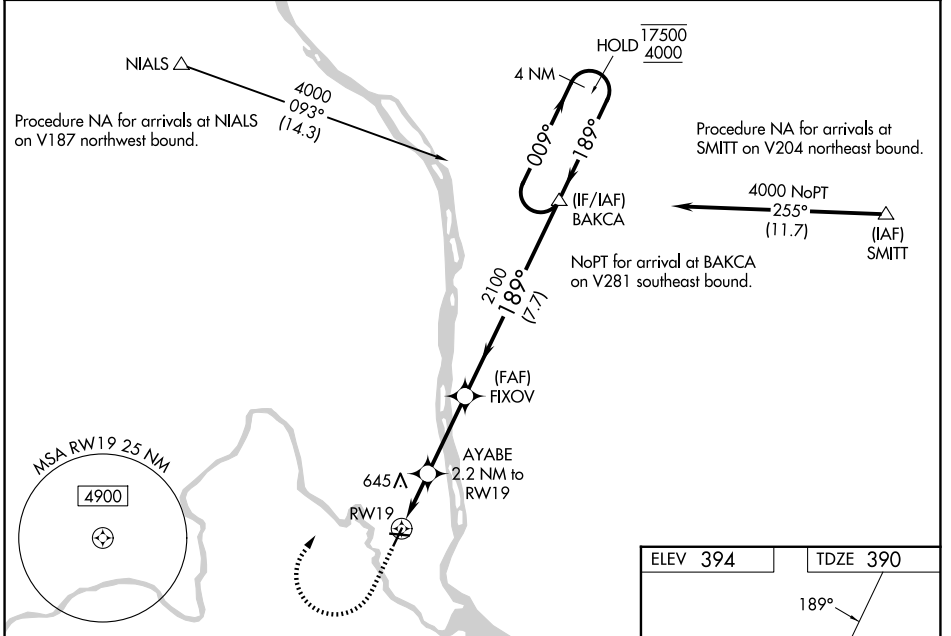
| | | |
|-------------|----------|-------------|
| APP CRS | Rwy Ldg | 4009 |
| 189° | TDZE | 390 |
| | Apt Elev | 394 |

RNAV (GPS) Z RWY 19

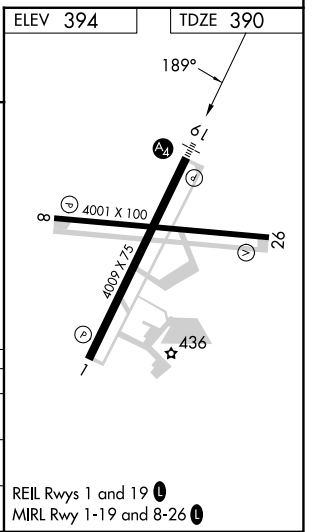
RICHLAND (R.LD)

| | | |
|--|--------------------|--|
| RNP APCH - GPS. | <p>MALS</p> | <p>MISSED APPROACH: Climb to 900 then climbing right turn to 4000 direct BAKCA and hold.</p> <p>*Missed approach requires minimum climb of 340 feet per NM to 2000; if unable to meet climb gradient, see RNAV (GPS) Y RWY 19.</p> |
| <p>⚠ For uncompensated Baro-VNAV systems, LNAV/VNAV NA below -12°C or above 54°C. Baro-VNAV and VDP NA when using PSC altimeter setting. For inop ALS when using PSC altimeter setting, increase LNAV Cats C and D visibility to 1 3/8 SM. When local altimeter setting not received, use PSC altimeter setting and increase LNAV/VNAV DA to 671 feet; increase all MDAs 20 feet and LNAV visibility Cats C and D 1/8 SM, and Circling visibility Cat C 1/4 SM.</p> | | |

| | | | |
|----------------------------|--|--------------------------|--|
| AWOS-3PT 132.675 | SPOKANE APP CON * 128.75 377.2 | CLNC DEL 122.4 | UNICOM 122.7 (CTAF) 📻 |
|----------------------------|--|--------------------------|--|



| | | | | |
|---------------|-----------------------|--------------------|--|----------------------|
| 900 | 4000 | BAKCA | VGSI and RNAV glidepath not coincident (VGSI Angle 3.00/TCH 30). | |
| | | | BAKCA | 4 NM Holding Pattern |
| | | FIXOV | AYABE 2.2 NM to RW19 | 17500 4000 |
| | | 2100 | 1.3 NM to RW19 | GP 3.00° TCH 40 |
| CATEGORY | A | B | C | D |
| LNAV/VNAV DA* | 651-7/8 | | 261 (300-7/8) | |
| LNAV MDA* | 840-7/8 450 (500-7/8) | | 840-1 450 (500-1) | |
| CIRCLING | 840-1 446 (500-1) | 1000-1 606 (700-1) | 1200-2 1/4 806 (900-2 1/4) | 1960-3 1566 (1600-3) |



NW-1, 14 MAY 2026 to 11 JUN 2026

NW-1, 14 MAY 2026 to 11 JUN 2026