

VOR/DME PSC 113.75 Chan 84(Y)	APP CRS 090°	Rwy Ldg TDZE Apt Elev N/A 394
---	------------------------	--

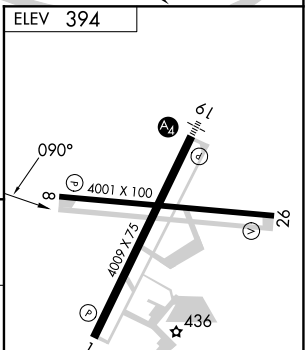
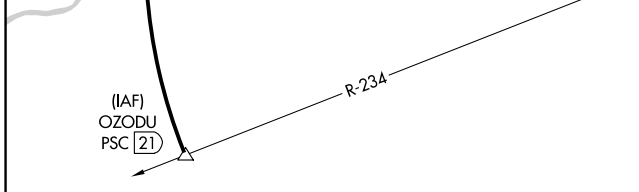
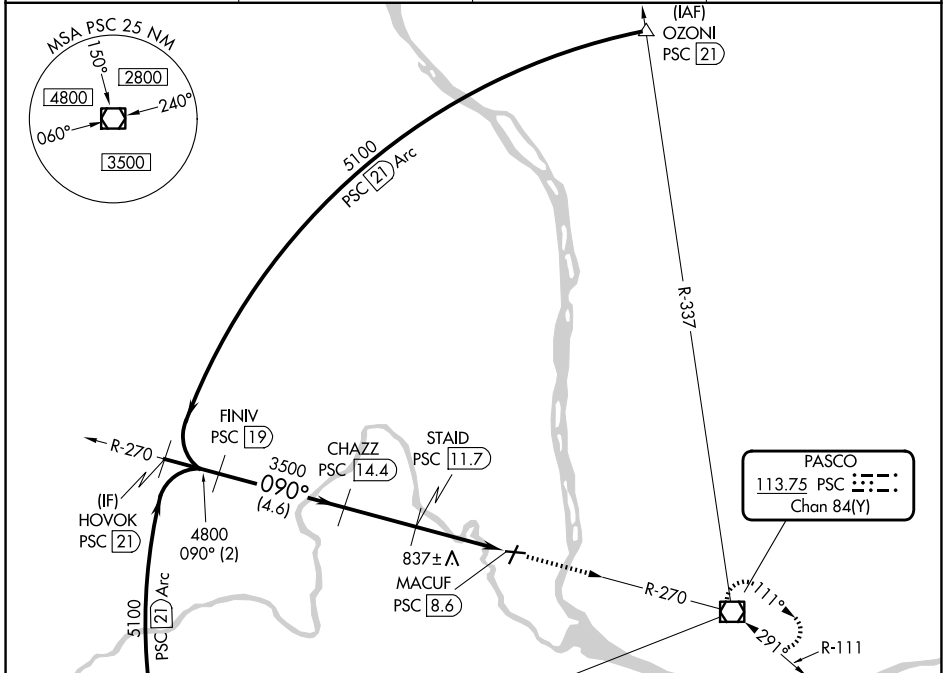
VOR/DME-A

RICHLAND (R.LD)

NA When local altimeter setting not received, use Pasco altimeter setting and increase all MDA 40 feet.

MISSED APPROACH: Climb to 3000 direct PSC VOR/DME and hold.

AWOS-3PT 132.675	SPOKANE APP CON * 128.75 377.2	CLNC DEL 122.4	UNICOM 122.7 (CTAF)
----------------------------	--	--------------------------	-------------------------------



HOVOK PSC [21]	FINIV PSC [19]	CHAZZ PSC [14.4]	STAID PSC [11.7]	MACUF PSC [8.6]
5100	4800	3500	1540	
2 NM		4.6 NM		2.7 NM

CATEGORY	A	B	C	D
CIRCLING	1140-1	746 (800-1)	1200-2¼ 806 (900-2¼)	1940-3 1546 (1600-3)

REIL Rwys 1 and 19
 MIRL Rwy 1-19 and 8-26

NW-1, 14 MAY 2026 to 11 JUN 2026

NW-1, 14 MAY 2026 to 11 JUN 2026