

WAAS CH 86436 W18A	APP CRS 183°	Rwy Ldg TDZE 467 Apt Elev 472	5002 467 472
--	------------------------	---	---

RNAV (GPS) RWY 18

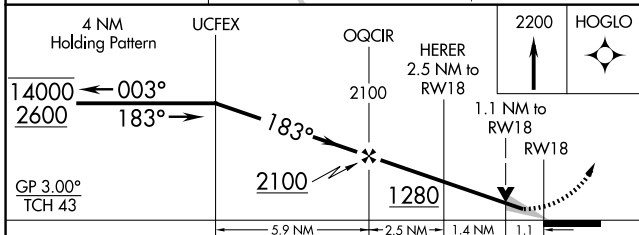
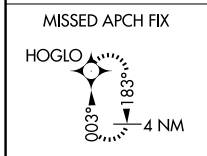
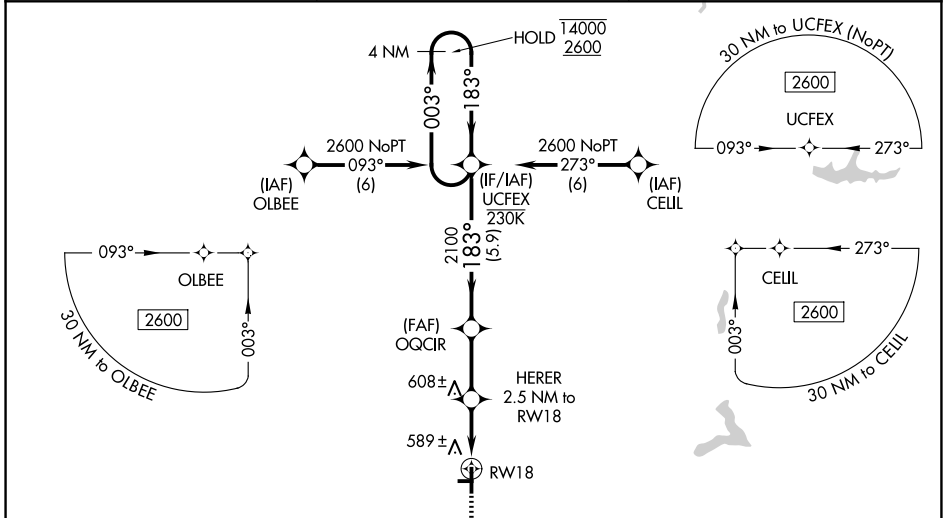
DAVISS COUNTY (DCY)

RNP APCH - GPS.

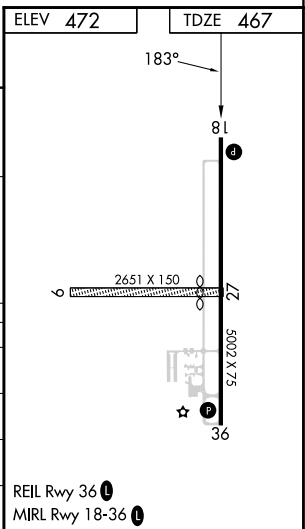
⚠ Circling NA to Rws 9 and 27. For uncompensated Baro-VNAV systems, LNAV/VNAV NA below -15°C or above 54°C.

MISSED APPROACH: Climb to 2200 direct HOGLO and hold.

AWOS-3PT 119.075	EVANSVILLE APP CON ★ 125.6 343.7	UNICOM 122.8 (CTAF) 0
----------------------------	--	---------------------------------



CATEGORY	A	B	C	D
LPV DA		778-7/8	311 (400-7/8)	
LNAV/VNAV DA		750-7/8	283 (300-7/8)	
LNAV MDA		840-1	373 (400-1)	
CIRCLING	1020-1 548 (600-1)	1060-1 588 (600-1)	1060-1½ 588 (600-1½)	1300-2¾ 828 (900-2¾)



EC-2, 14 MAY 2026 to 11 JUN 2026

EC-2, 14 MAY 2026 to 11 JUN 2026