

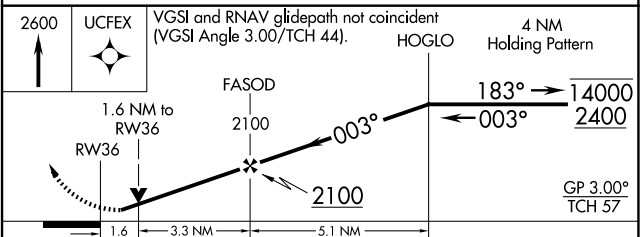
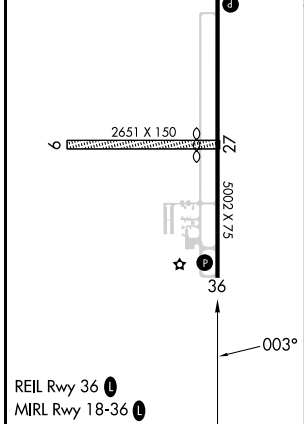
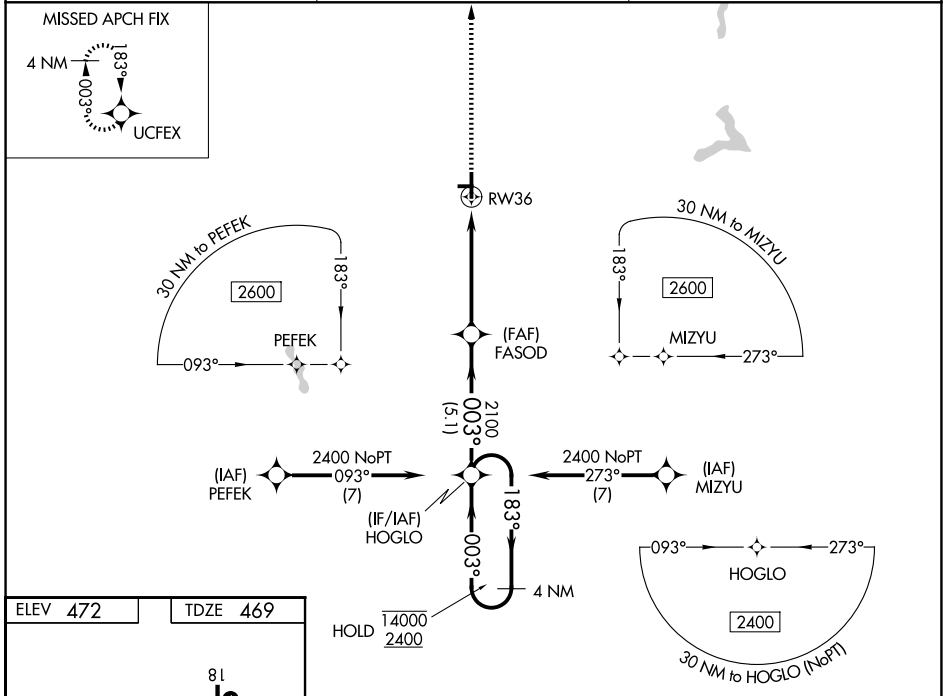
WAAS CH <b>45647</b> <b>W36A</b>	APP CRS <b>003°</b>	Rwy Ldg TDZE <b>469</b> Apt Elev <b>472</b>	<b>5002</b>
--	------------------------	---	-------------

# RNAV (GPS) RWY 36

DAVISS COUNTY (DCY)

RNP APCH - GPS.	MISSED APPROACH: Climb to 2600 direct UCFEX and hold.
-----------------	---

AWOS-3PT <b>119.075</b>	EVANSVILLE APP CON ★ <b>125.6 343.7</b>	UNICOM <b>122.8</b> (CTAF) <b>0</b>
----------------------------	--	--



CATEGORY	A	B	C	D
LPV DA	852-1 $\frac{1}{8}$ 383 (400-1 $\frac{1}{8}$ )			
LNAV/VNAV DA	1020-1 $\frac{5}{8}$ 551 (600-1 $\frac{5}{8}$ )			
LNAV MDA	1020-1	551 (600-1)	1020-1 $\frac{5}{8}$	551 (600-1 $\frac{5}{8}$ )
CIRCLING	1040-1 568 (600-1)	1080-1 608 (700-1)	1080-1 $\frac{3}{4}$ 608 (700-1 $\frac{3}{4}$ )	1300-2 $\frac{3}{4}$ 828 (900-2 $\frac{3}{4}$ )

EC-2, 14 MAY 2026 to 11 JUN 2026

EC-2, 14 MAY 2026 to 11 JUN 2026