

WAAS CH <b>82500</b> <b>W15A</b>	APP CRS <b>150°</b>	Rwy Ldg TDZE Apt Elev	<b>4417</b> <b>17</b> <b>19</b>
--	------------------------	-----------------------------	---------------------------------------

# RNAV (GPS) RWY 15

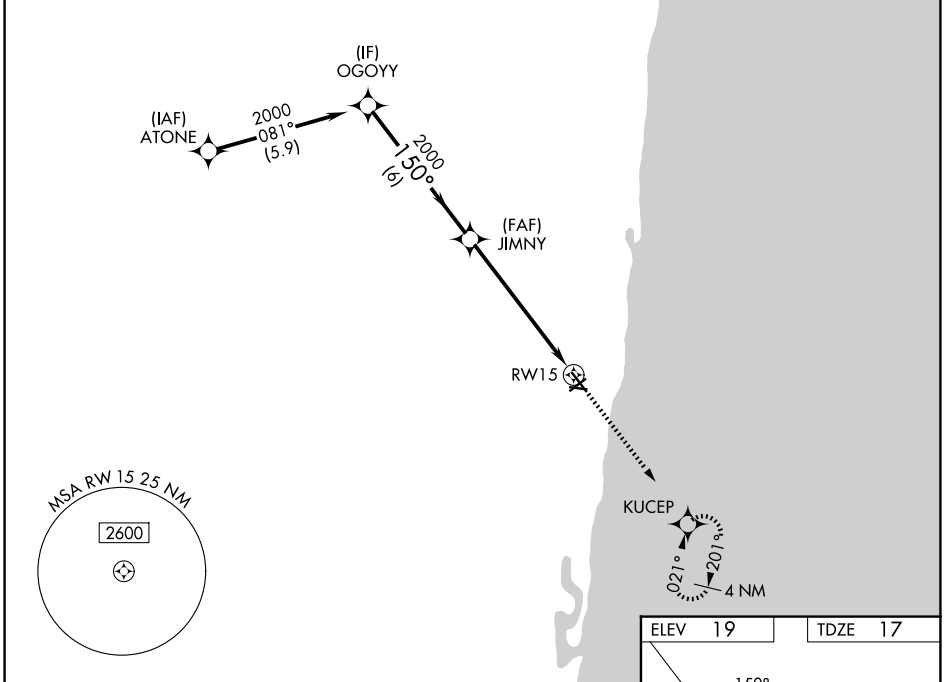
POMPANO BEACH AIRPARK (PMP)

RNP APCH - GPS.

**⚠** Inop table does not apply. For uncompensated Baro-VNAV systems, LNAV/VNAV NA below 0°C or above 54°C. When local altimeter setting not received, use FXE altimeter setting. Rwy 15 helicopter visibility reduction below 3/4 SM NA. Circling Rwy 6, 10, 24, 28 NA at night.

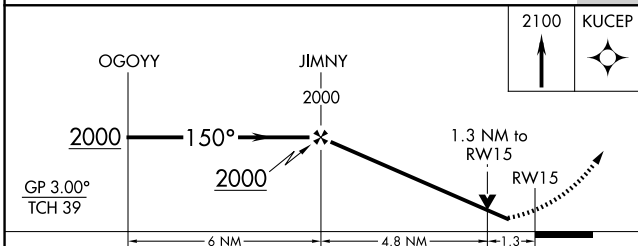
MALS MISSED APPROACH: Climb to 2100 direct KUCEP and hold, climb-in-hold to 5000.

ATIS <b>120.55</b>	MIAMI APP CON <b>119.7 306.3</b>	POMPANO BEACH TOWER * <b>125.4 (CTAF)</b>	GND CON <b>121.9</b>	UNICOM <b>122.95</b>
-----------------------	-------------------------------------	--	-------------------------	-------------------------

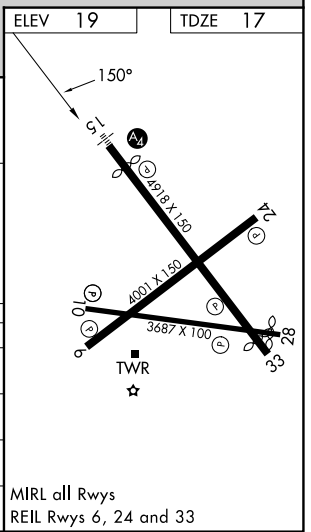


SE-3, 14 MAY 2026 to 11 JUN 2026

SE-3, 14 MAY 2026 to 11 JUN 2026



CATEGORY	A	B	C	D
LPV DA	296-1	279 (300-1)		NA
LNAV/VNAV DA	399-1	382 (400-1)		NA
LNAV MDA	480-1	463 (500-1)		NA
CIRCLING	660-1	641 (700-1)		NA



MIRL all Rwys  
REIL Rws 6, 24 and 33