

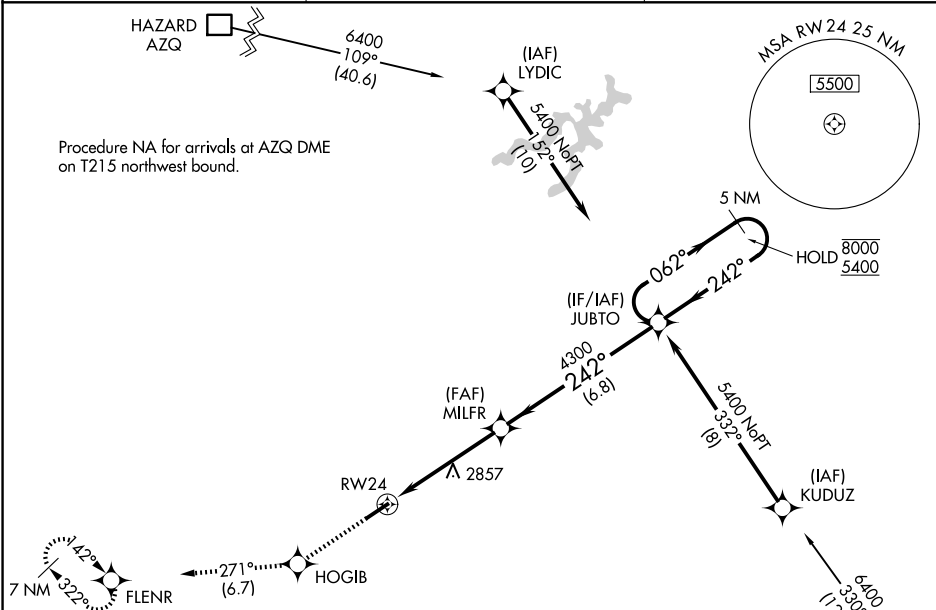
APP CRS <b>242°</b>	Rwy Ldg TDZE Apt Elev	<b>5131</b> <b>2685</b> <b>2685</b>
------------------------	-----------------------------	---

# RNAV (GPS) RWY 24

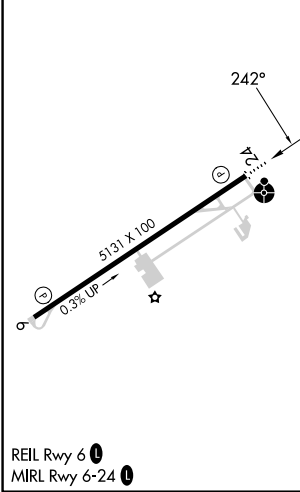
LONESOME PINE (LNP)

RNP APCH - GPS.		MISSED APPROACH: Climb to 6400 direct HOGIB and on track 271° to FLENR and hold, continue climb-in-hold to 6400.
⚠ Rwy 24 helicopter visibility reduction below 1 SM NA. Procedure NA at night. Inop table does not apply to LNAV Cats A/B. For inop ALS, increase LNAV Cat C/D visibility to 1½ SM.	ODALS 	

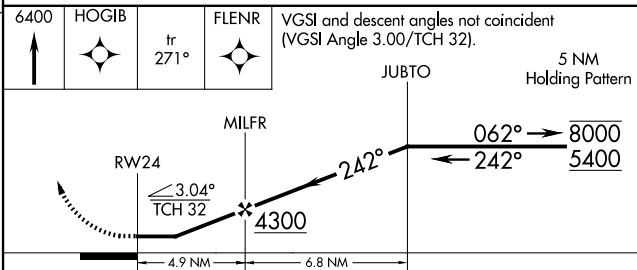
AWOS-3 <b>118.6</b>	INDIANAPOLIS CENTER <b>126.575 257.85</b>	UNICOM <b>123.0 (CTAF)</b>
------------------------	--	-------------------------------



ELEV 2685	TDZE 2685
-----------	-----------



Procedure NA for arrival on GZG VOR/DME airway radials 248 CW 058.



CATEGORY	A	B	C	D
LNAV MDA	3140-1	455 (500-1)	3140-1½	455 (500-1½)
CIRCLING	3240-1 555 (600-1)	3360-1 675 (700-1)	3380-2 695 (700-2)	3580-2¾ 895 (900-2¾)

NE-3, 14 MAY 2026 to 11 JUN 2026

NE-3, 14 MAY 2026 to 11 JUN 2026