

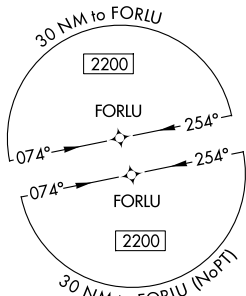
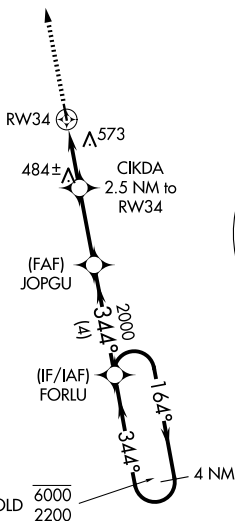
WAAS CH <b>93925</b> <b>W34A</b>	APP CRS <b>344°</b>	Rwy Ldg <b>3218</b> TDZE <b>288</b> Apt Elev <b>289</b>
--	------------------------	---

# RNAV (GPS) RWY 34

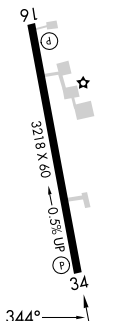
KENEDY RGNL (2R.9)

RNP APCH - GPS.	MISSED APPROACH: Climb to 2000 direct WONIX and hold.
<p>▼ Procedure NA at night. Rwy 34 helicopter visibility reduction below 1 SM NA. When local altimeter setting not received, use PEZ altimeter setting and increase all MDAs 100 feet.</p>	

AWOS 3-PT <b>118.45</b>	HOUSTON CENTER <b>134.6 322.5</b>	UNICOM <b>123.0 (CTAF) 0</b>
----------------------------	--------------------------------------	---------------------------------



ELEV 289	TDZE 288
----------	----------



REIL Rwy 16  
MIRL Rwy 16-34 0

2000	WONIX	Visual Segment - Obstacles.			
↑	☉		JOPGU	FORLU	4 NM Holding Pattern
		CIKDA 2.5 NM to RW34			
			JOPGU	FORLU	
			2000	6000	2200
			344°	164°	344°
			1100		
		2.5 NM	2.8 NM	4 NM	
CATEGORY	A	B	C	D	
LP MDA	840-1	552 (600-1)		NA	
LNAV MDA	900-1	612 (700-1)		NA	

SC-3, 14 MAY 2026 to 11 JUN 2026

SC-3, 14 MAY 2026 to 11 JUN 2026