

VOR/DME IDA 113.85 Chan 85(Y)	APP CRS 016°	Rwy Ldg TDZE 3900 4862 Apt Elev 4862
--	------------------------	--

VOR RWY 35

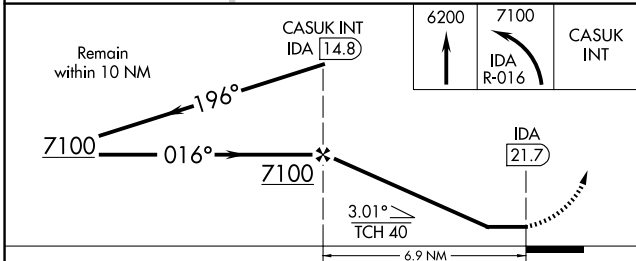
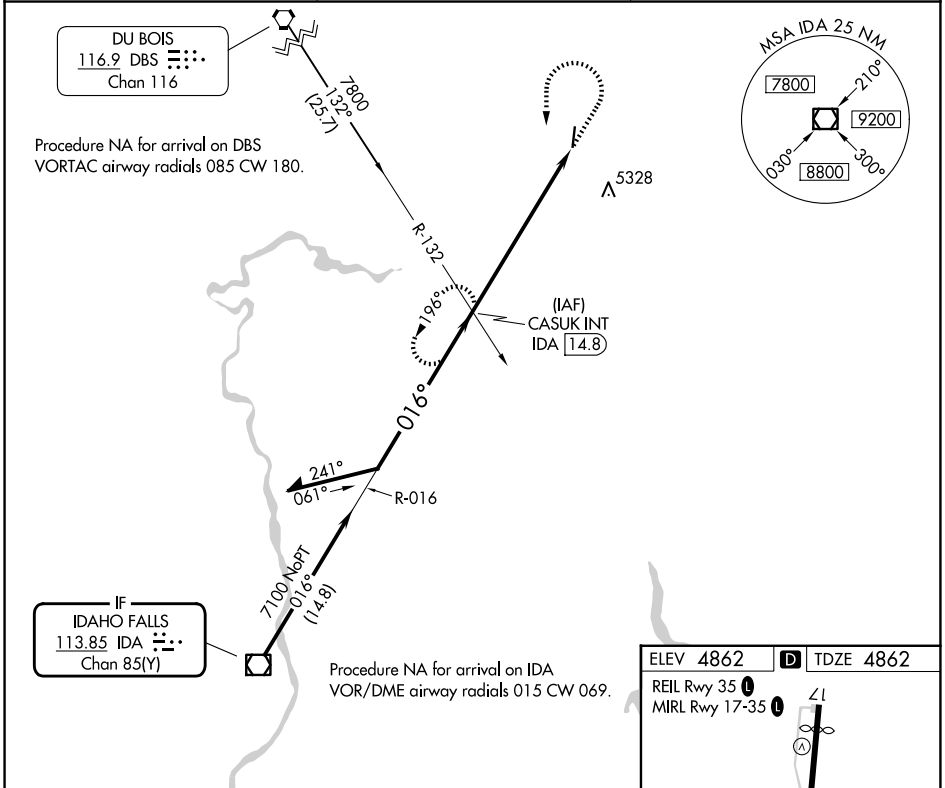
REXBURG-MADISON COUNTY (R.X.E)

- ▼** Rwy 35 helicopter visibility reduction below 1 SM NA.
- ▲** Straight-in Rwy 35 NA at night, Circling Rwy 35 NA at night.
- MISSED APPROACH:** Climb to 6200 then climbing left turn to 7100 on IDA R-016 to CASUK INT/IDA 14.8 DME and hold.

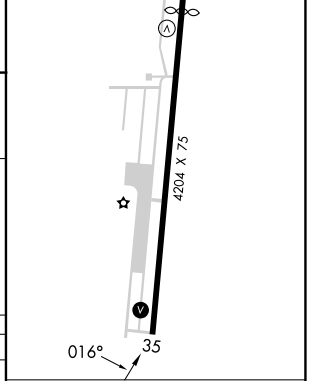
ASOS
135.075

SALT LAKE CENTER
128.35 239.25

UNICOM
122.8 (CTAF) **0**



ELEV 4862	D	TDZE 4862
REIL Rwy 35		MIRL Rwy 17-35



CATEGORY	A	B	C	D
S-35	5680-1 818 (900-1)	5680-1¼ 818 (900-1¼)	5680-2½ 818 (900-2½)	
CIRCLING	5680-1¼ 818 (900-1¼)		5680-2½ 818 (900-2½)	5760-3 898 (900-3)

Knots	60	90	120	150	180
Min:Sec	6:54	4:36	3:27	2:46	2:18