

WAAS CH 78107 W24A	APP CRS 239°	Rwy Idg TDZE Apt Elev	5001 818 819
--	------------------------	-----------------------------	---

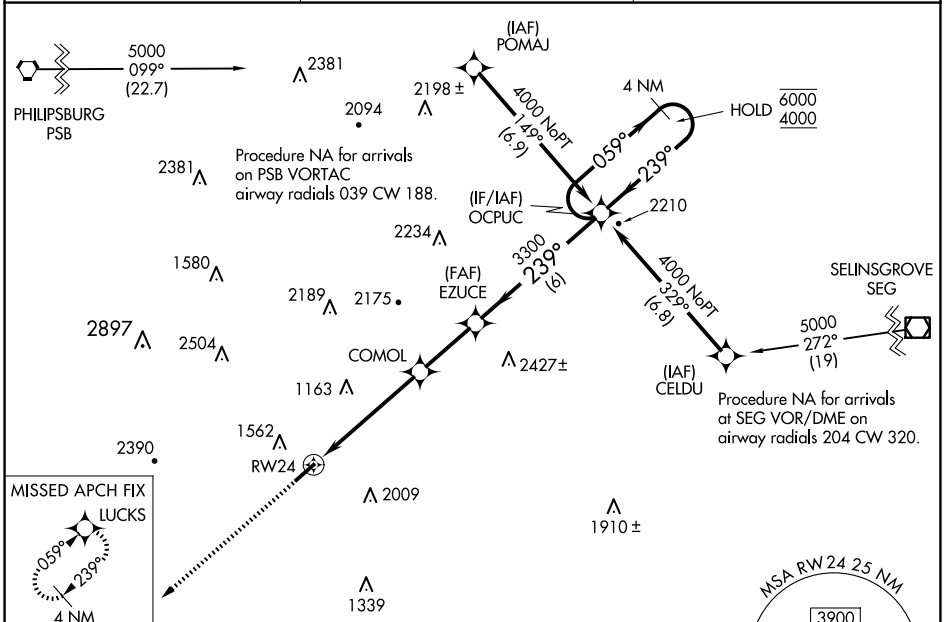
RNAV (GPS) RWY 24

MIFFLIN COUNTY (R.V.L)

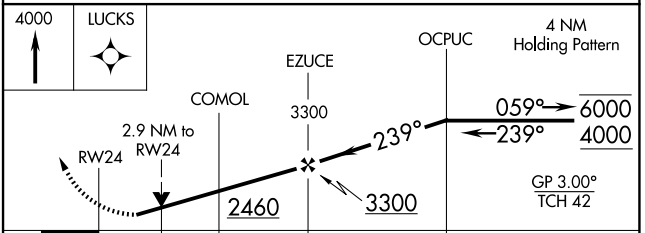
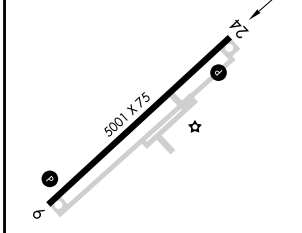
RNP APCH - GPS.

MISSSED APPROACH:
Climb to 4000 direct LUCKS and hold.

AWOS-3PT 123.85	NEW YORK CENTER 134.8 338.3	UNICOM 122.7 (CTAF)
---------------------------	---------------------------------------	-------------------------------



ELEV 819	TDZE 818
----------	----------



CATEGORY	A	B	C	D
LPV DA		1506-2	688 (700-2)	
LNAV/VNAV DA		1870-4	1052 (1100-4)	
LNAV MDA	1780-1¼ 962 (1000-1¼)	1780-1½ 962 (1000-1½)	1780-3	962 (1000-3)

REIL Rwy 6 and 24 **1**
MIRL Rwy 6-24 **1**

NE-4, 14 MAY 2026 to 11 JUN 2026

NE-4, 14 MAY 2026 to 11 JUN 2026