

WAAS CH 86444 W06A	APP CRS 059°	Rwy Idg TDZE Apt Elev	5001 819 819
--	------------------------	-----------------------------	---

RNAV (GPS) RWY 6

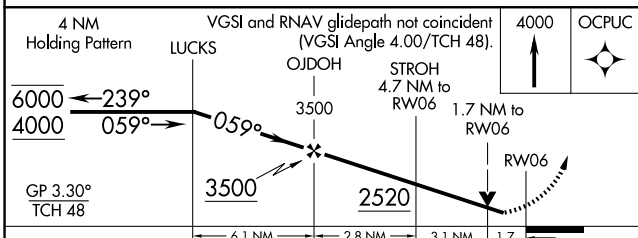
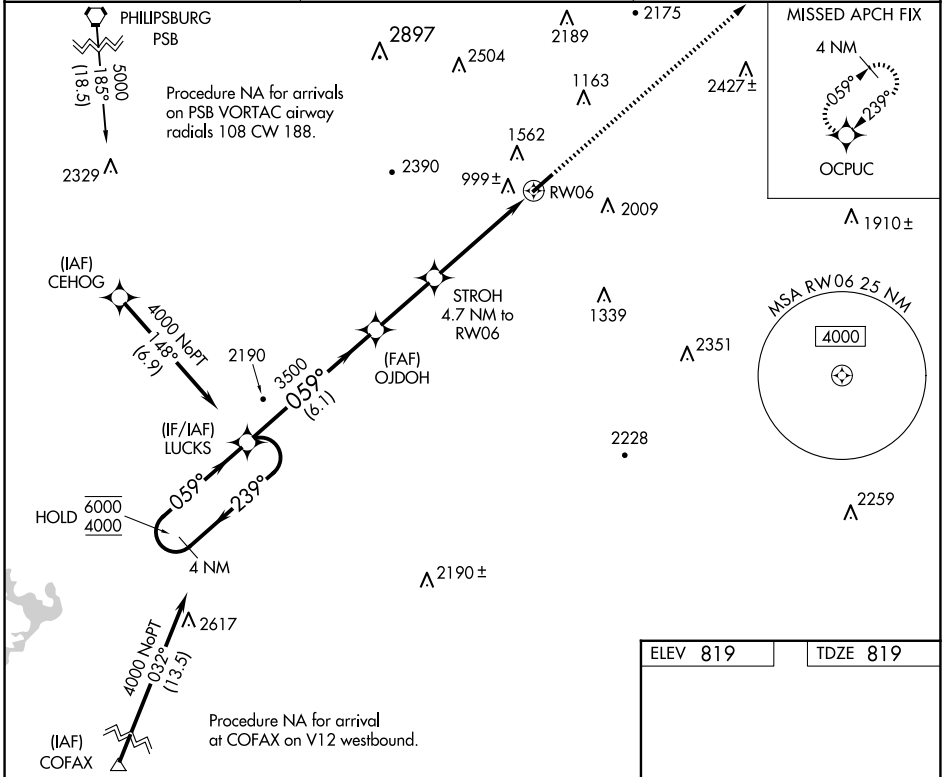
MIFFLIN COUNTY (R.V.L.)

RNP APCH - GPS.

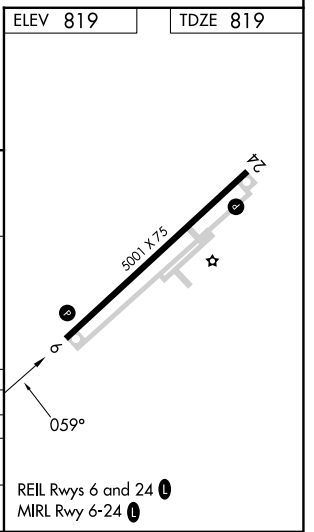
MISSED APPROACH:
Climb to 4000 direct
OCPUC and hold.

Rwy 6 helicopter visibility reduction below 3/4 SM NA. Baro-VNAV NA.

AWOS-3PT 123.85	NEW YORK CENTER 134.8 338.3	UNICOM 122.7 (CTAF)
---------------------------	---------------------------------------	-------------------------------



CATEGORY	A	B	C	D
LPV DA		1314-1 3/8	495 (500-1 3/8)	
LNNAV/DA VNAV		1506-2	687 (700-2)	
LNNAV MDA	1580-1 761 (800-1)	1580-1 1/4 761 (800-1 1/4)	1580-2 1/2	761 (800-2 1/2)



NE-4, 14 MAY 2026 to 11 JUN 2026

NE-4, 14 MAY 2026 to 11 JUN 2026