

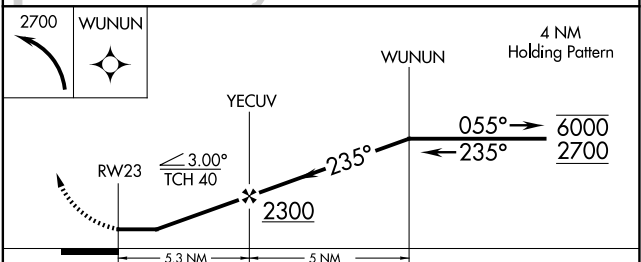
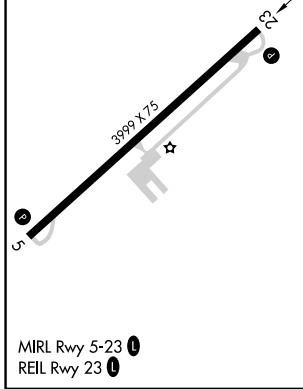
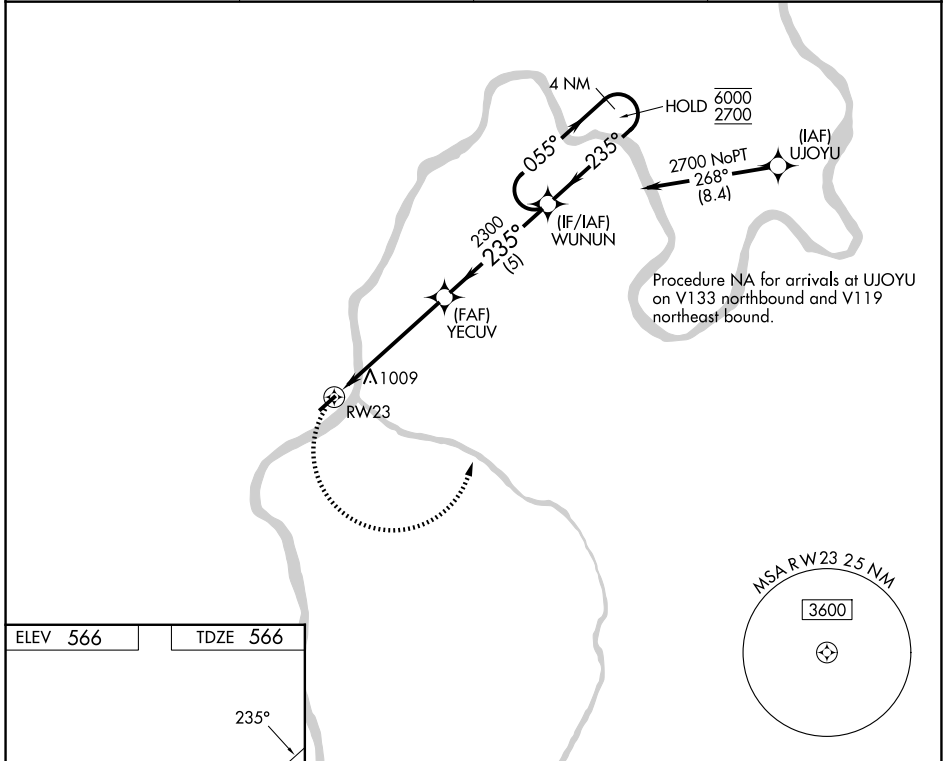
APP CRS <b>235°</b>	Rwy Ldg TDZE Apt Elev	<b>3999</b> <b>566</b> <b>566</b>
------------------------	-----------------------------	---

# RNAV (GPS) RWY 23

GALLIA-MEIGS RGNL (GAS)

RNP APCH - GPS.	MISSED APPROACH: Climbing left turn to 2700 direct WUNUN and hold.
Helicopter visibility reduction below 1 SM NA. Procedure NA at night.	

AWOS-3PT <b>119.925</b>	HUNTINGTON APP CON <b>128.4 270.1</b>	CLNC DEL <b>124.55</b>	UNICOM <b>123.0 (CTAF)</b>
----------------------------	--	---------------------------	-------------------------------



CATEGORY	A	B	C	D
LNNAV MDA	1320-1 754 (800-1)	1320-1¼ 754 (800-1¼)	1320-2 754 (800-2)	NA
CIRCLING	1440-1¼	874 (900-1¼)	1440-2½ 874 (900-2½)	NA

EC-2, 14 MAY 2026 to 11 JUN 2026

EC-2, 14 MAY 2026 to 11 JUN 2026