

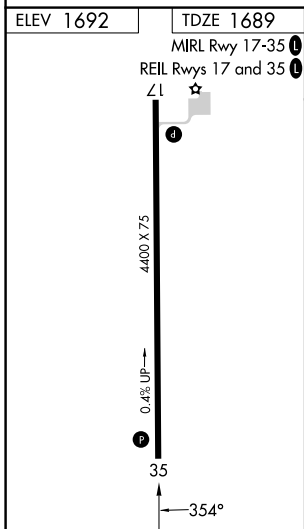
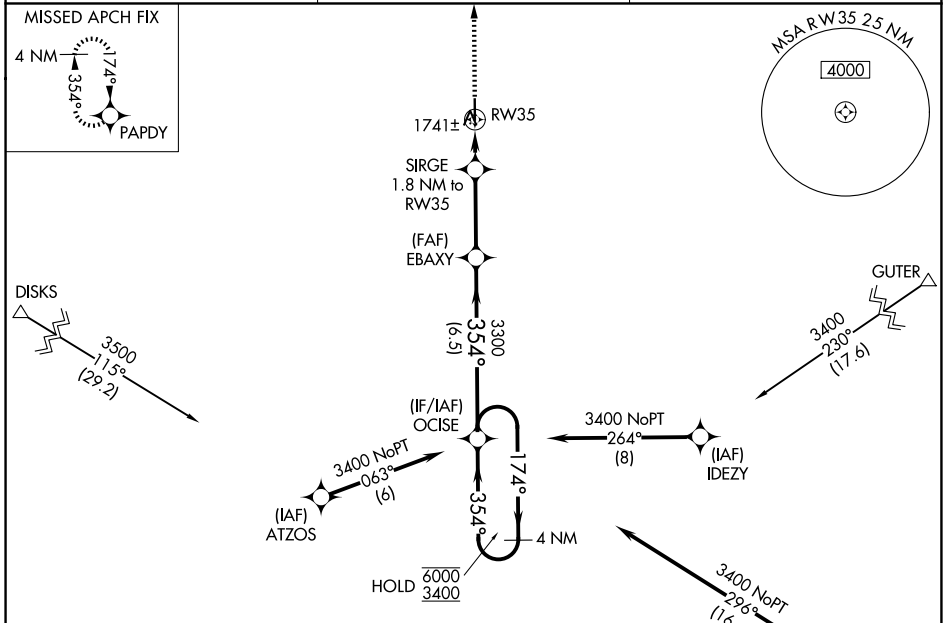
WAAS CH 42639 W35A	APP CRS 354°	Rwy Ldg TDZE Apt Elev	4400 1689 1692
--	------------------------	-----------------------------	---

RNAV (GPS) RWY 35

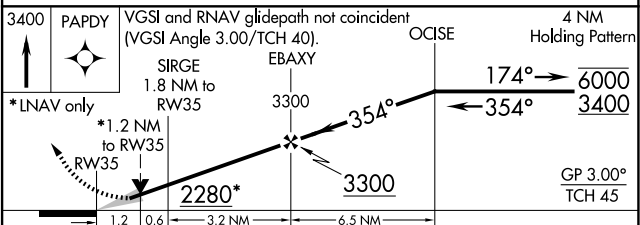
LYONS-RICE COUNTY MUNI (LYO)

RNP APCH.	<p>▼ Baro-VNAV and VDP NA when using Hutchinson altimeter setting. For uncompensated Baro-VNAV systems, LNAV/VNAV NA below -18°C or above 54°C. Circling Rwy 17 NA at night. When local altimeter setting not received, use Hutchinson altimeter setting.</p>	<p>MISSED APPROACH: Climb to 3400 direct PAPDY and hold.</p>
-----------	---	--

AWOS-3P 119.925	KANSAS CITY CENTER 118.8 322.425	UNICOM 122.8 (CTAF) 0
---------------------------	--	---------------------------------



Procedure NA for arrival on HUT VOR/DME airway radials 230 CW 021.



CATEGORY	A	B	C	D
LPV DA	2016-1 1/8	327 (400-1 1/8)		NA
LNAV/VNAV DA	2016-1 1/8	327 (400-1 1/8)		NA
LNAV MDA	2080-1	391 (400-1)		NA
CIRCLING	2260-1	568 (600-1)		NA

NC-2, 14 MAY 2026 to 11 JUN 2026

NC-2, 14 MAY 2026 to 11 JUN 2026