

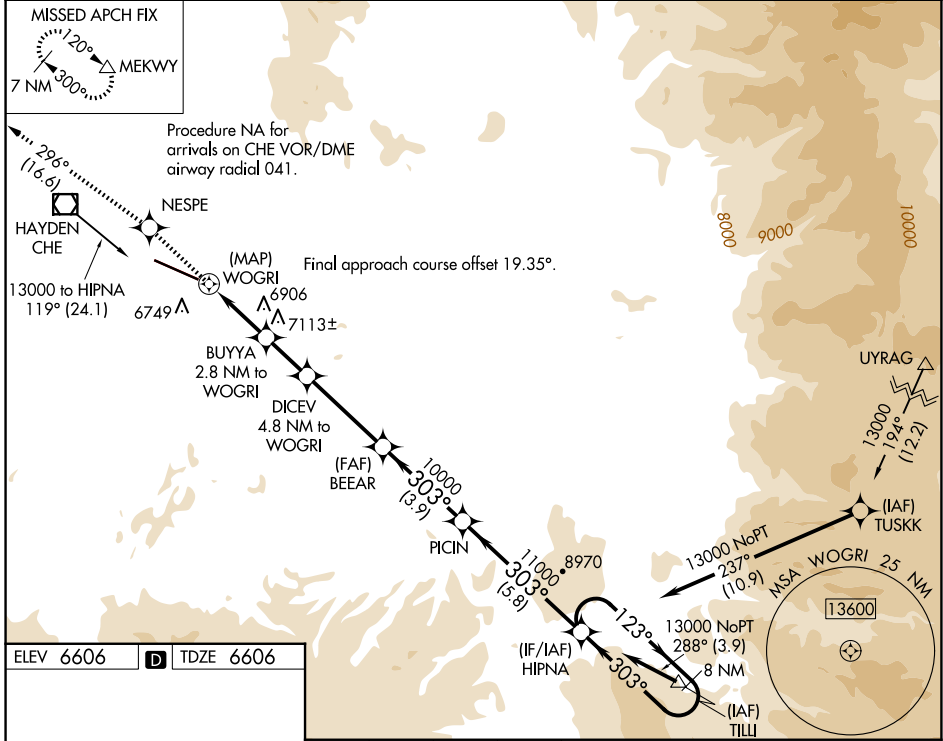
WAAS CH <b>48825</b> <b>W28A</b>	APP CRS <b>303°</b>	Rwy Ldg <b>10000</b> TDZE <b>6606</b> Apt Elev <b>6606</b>
--	------------------------	--

# RNAV (GPS) RWY 28

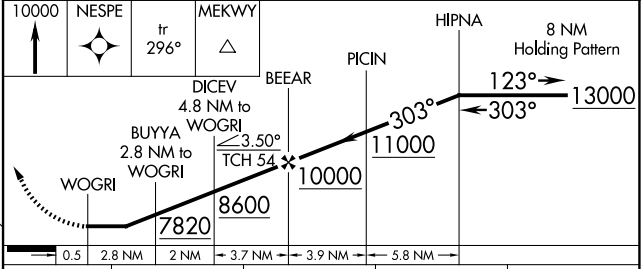
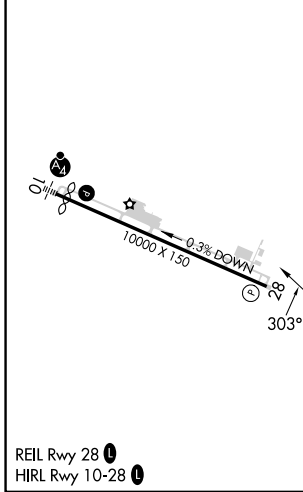
YAMPA VALLEY (HDN)

RNP APCH.	MISSED APPROACH: Climb to 10000 direct NESPE and on track 296° to MEKWY and hold.
<p>⚠ When local altimeter not received use Craig-Moffat altimeter setting and increase all MDA 100 feet, increase LP and LNAV Cat C/D visibility ¼ mile. Rwy 28 helicopter visibility reduction below ¾ SM NA.</p>	

AWOS-3PT <b>119.275</b>	DENVER CENTER <b>120.475 235.975</b>	UNICOM <b>123.0 (CTAF) 0</b>
----------------------------	---	---------------------------------



ELEV 6606	D	TDZE 6606
-----------	---	-----------



CATEGORY	A	B	C	D
LP MDA	7000-1	394 (400-1)	7000-1½	394 (400-1½)
LNAV MDA	7080-1	474 (500-1)	7080-1¾	474 (500-1¾)
CIRCLING	7220-1	614 (700-1)	7660-3 1054 (1100-3)	8180-3 1574 (1600-3)

SW-1, 14 MAY 2026 to 11 JUN 2026

SW-1, 14 MAY 2026 to 11 JUN 2026