

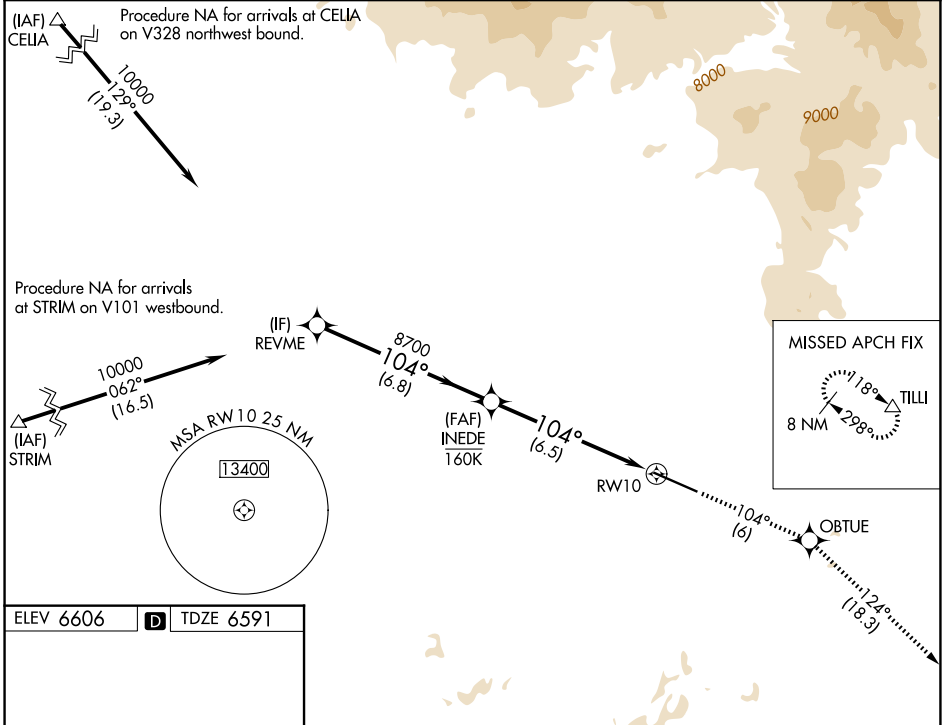
APP CRS	Rwy Ldg	<b>9490</b>
<b>104°</b>	TDZE	<b>6591</b>
	Apt Elev	<b>6606</b>

# RNAV (RNP) Z RWY 10

YAMPA VALLEY (HDN)

RNP AR APCH-GPS.	MALSF	MISSED APPROACH: Climb to 13800 on track 104° to OBTUE and on track 124° to TILLI and hold, continue climb-in-hold to 13800. *Missed approach requires minimum climb of 286 feet per NM to 8900.
<p><b>⚠</b> Rwy 10 helicopter visibility reduction below 3/4 SM NA. For uncompensated Baro-VNAV systems, procedure NA below -28°C or above 54°C. Inop table does not apply to RNP 0.30. For inop ALS, increase RNP 0.20 all Cats visibility to 2 SM.</p>		

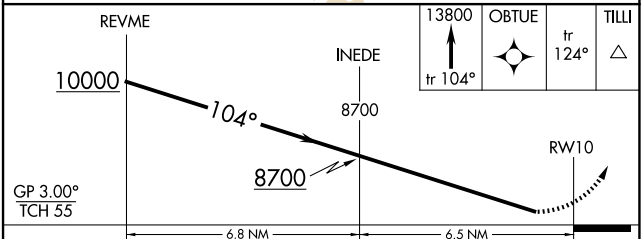
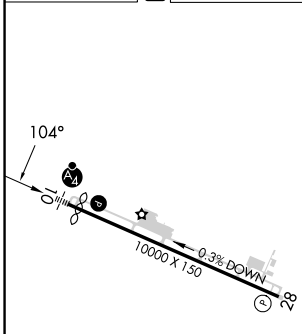
AWOS-3PT <b>119.275</b>	DENVER CENTER <b>120.475 235.975</b>	UNICOM <b>123.0 (CTAF) 0</b>
----------------------------	-----------------------------------------	---------------------------------



Procedure NA for arrivals at CELIA on V328 northwest bound.

Procedure NA for arrivals at STRIM on V101 westbound.

ELEV 6606	<b>D</b>	TDZE 6591
-----------	----------	-----------



CATEGORY	A	B	C	D
RNP 0.20 DA*		7016-1	425 (500-1)	
RNP 0.20 DA		7344-1 7/8	753 (800-1 7/8)	
RNP 0.30 DA		7949-5	1358 (1400-5)	

REIL Rwy 28 **0**  
HIRL Rwy 10-28 **0**

**AUTHORIZATION REQUIRED**

SW-1, 14 MAY 2026 to 11 JUN 2026

SW-1, 14 MAY 2026 to 11 JUN 2026