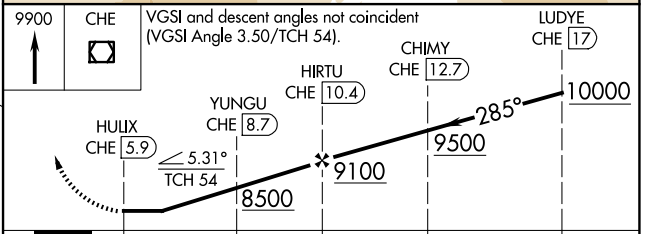
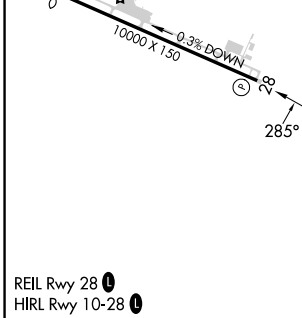
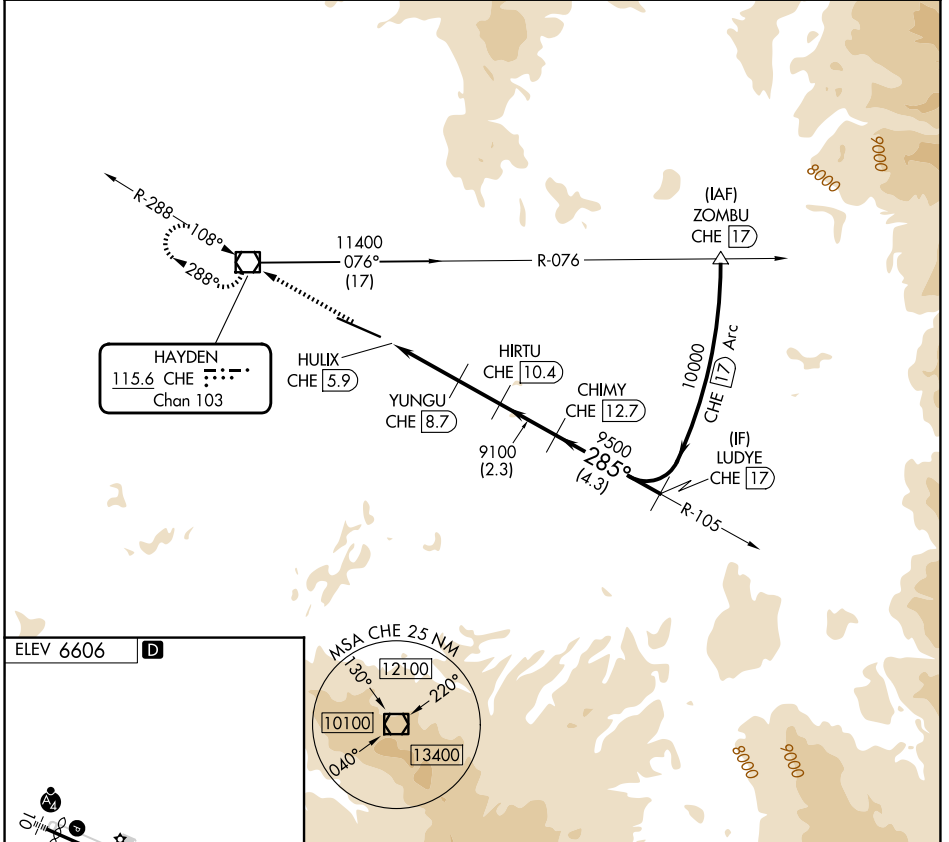


VOR/DME CHE <b>115.6</b> Chan <b>103</b>	APP CRS <b>285°</b>	Rwy Ldg TDZE Apt Elev <b>6606</b>	<b>N/A</b> <b>N/A</b>
--	------------------------	---	--------------------------

**VOR-B**  
YAMPA VALLEY (HDN)

DME required.	MISSED APPROACH: Climb to 9900 direct CHE VOR/DME and hold, continue climb-in-hold to 9900.
Rwy 28 helicopter visibility reduction below 3/4 SM NA.	

AWOS-3PT <b>119.275</b>	DENVER CENTER <b>120.475 235.975</b>	UNICOM <b>123.0 (CTAF) 0</b>
----------------------------	---	---------------------------------



REIL Rwy 28 0	HIRL Rwy 10-28 0			
CATEGORY	A B C D			
CIRCLING	7900-1 1/4 1294 (1300-1 1/4)	7900-1 1/2 1294 (1300-1 1/2)	7900-3 1294 (1300-3)	8200-3 1594 (1600-3)

SW-1, 14 MAY 2026 to 11 JUN 2026

SW-1, 14 MAY 2026 to 11 JUN 2026