

OCEANSIDE, CALIFORNIA

# RNAV (GPS) RWY 21

WAS CH <b>91083</b> W21A	APCH CRS <b>211°</b>	Rwy ldg TDZE Arprt Elev	<b>6005</b> <b>78</b> <b>78</b>
--------------------------------	-------------------------	----------------------------	---------------------------------------

(USN) CAMP PENDLETON MCAS (MUNN FLD) (KNFG)

RNP APCH-GPS

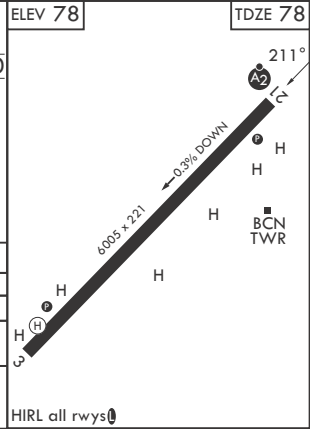
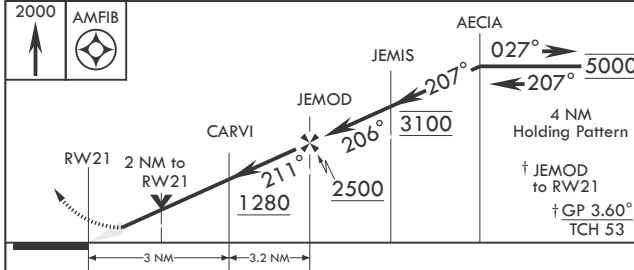
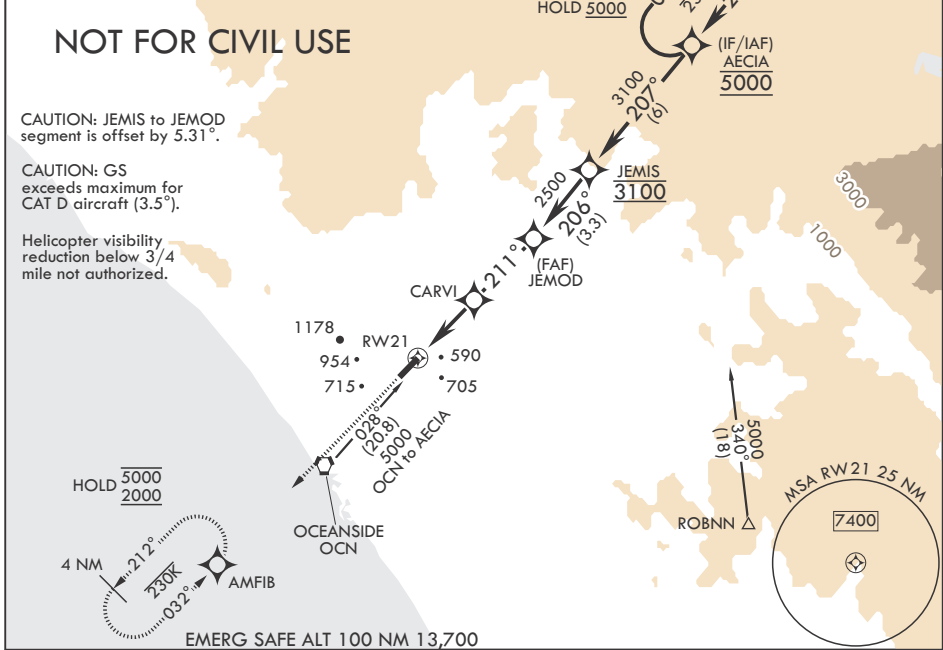
▼ \* When ALS inop, increase CAT A vis to 1 mile, CAT B vis to 1 1/4 miles, CAT CD vis to 2 1/2 miles.  
\*\* Circling Rwy 3 not authorized at night.

SALSF MISSED APPROACH: Climb to 2000 direct AMFIB and hold.

ATIS* <b>285.45</b>	SOCAL APP CON/DEP CON <b>127.3 323.0</b>	TOWER* <b>128.775 0 340.2</b>	GND CON <b>134.675 360.2</b>	ASR/PAR
------------------------	---	----------------------------------	---------------------------------	---------

Knots	60	120	180	240	300	360
V/V(fpm)	502	1004	1506	2008	2510	3012

Min climb of 502 ft/NM to 740-Controlling obstacle 715



CATEGORY	A	B	C	D
LPV DA	329-3/4	251 (300-3/4)	378-3/4	300 (300-3/4)
LNAV MDA*	860-3/4 782 (800-3/4)	860-1 782 (800-1)	860-2	782 (800-2)
CIRCLING**	1020-1 1/4 942 (1000-1 1/4)	1260-1 1/2 1182 (1200-1 1/2)	1480-3	1402 (1500-3)

OCEANSIDE, CALIFORNIA 33°18'N - 117°21'W CAMP PENDLETON MCAS (MUNN FLD) (KNFG)

Amdt 7 25DEC25

# RNAV (GPS) RWY 21

SW-3, 14 MAY 2026 to 11 JUN 2026

SW-3, 14 MAY 2026 to 11 JUN 2026