

| | | | |
|--|------------------------|-----------------------------|---|
| WAAS CH 40324 W19A | APP CRS 193° | Rwy Idg TDZE Apt Elev | 5003 804 817 |
|--|------------------------|-----------------------------|---|

RNAV (GPS) RWY 19

DOUGLAS HUNTER FLD (1M5)

RNP APCH.

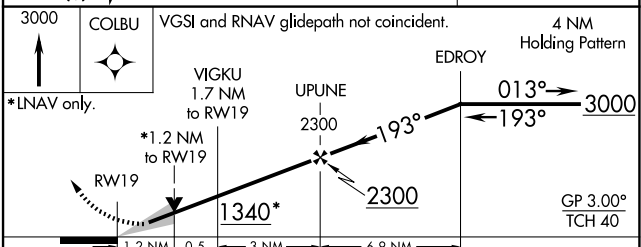
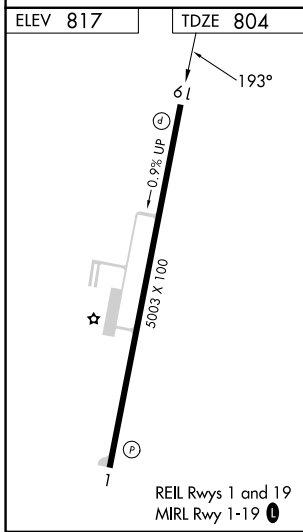
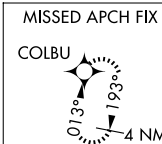
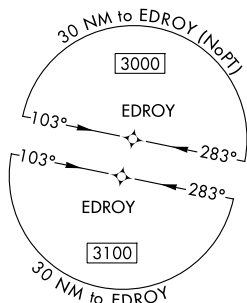
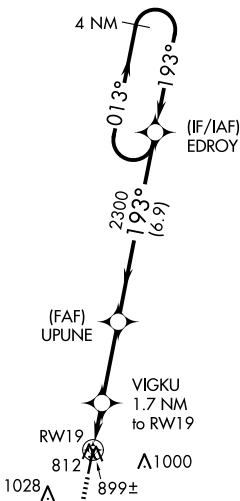
⚠ For uncompensated Baro-VNAV systems, LNAV/VNAV NA below -16°C or above 54°C. Baro-VNAV and VDP NA when using Bowling Green altimeter setting. When local altimeter setting not received, use Bowling Green altimeter setting and increase LPV DA to 1144 and all visibilities ¼ mile; increase all LNAV/VNAV DA to 1184 and all visibilities ¼ mile; increase all MDA 100 feet and increase LNAV Cat C/D visibility ⅜ mile.

MISSED APPROACH: Climb to 3000 direct COLBU and hold.

AWOS-3PT
118.175

NASHVILLE APP CON
119.35 372.0

UNICOM
122.975 (CTAF)



| CATEGORY | A | B | C | D |
|--------------|---|---------|--------------|---|
| LPV DA | | 1054-1 | 250 (300-1) | |
| LNAV/VNAV DA | | 1094-1½ | 290 (300-1½) | |
| LNAV MDA | | 1160-1 | 356 (400-1) | |

SE-1, 14 MAY 2026 to 11 JUN 2026

SE-1, 14 MAY 2026 to 11 JUN 2026