

WAAS CH <b>40328</b> <b>W25A</b>	APP CRS <b>251°</b>	Rwy Ldg TDZE Apt Elev	<b>5001</b> <b>781</b> <b>781</b>
--	------------------------	-----------------------------	---

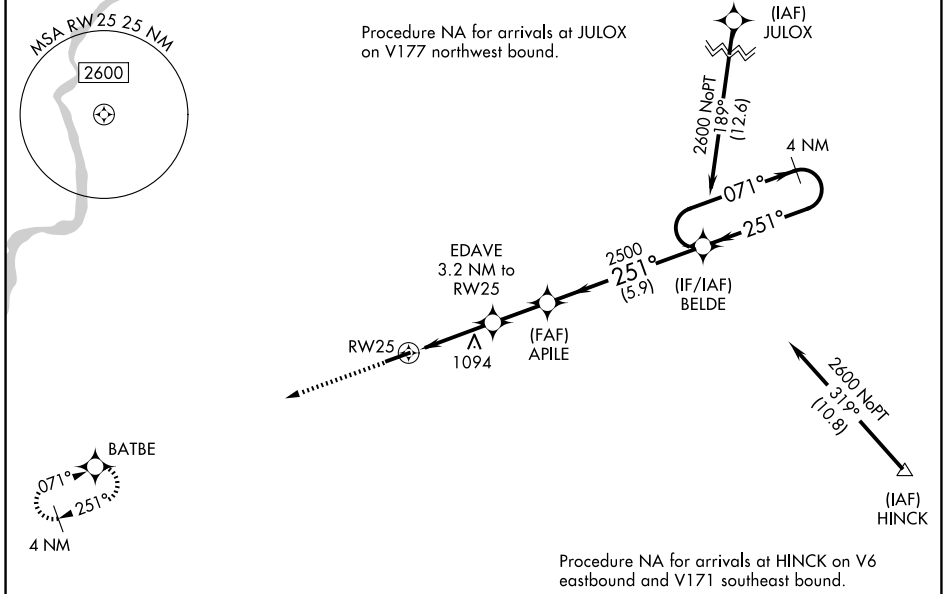
# RNAV (GPS) RWY 25

ROCHELLE MUNI/KORITZ FLD (R.P.J)

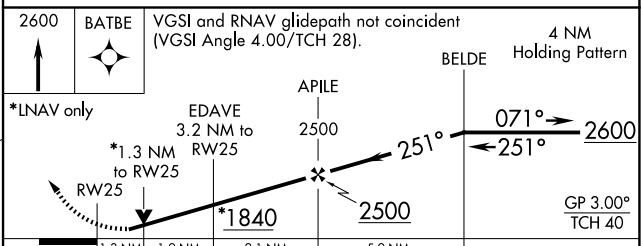
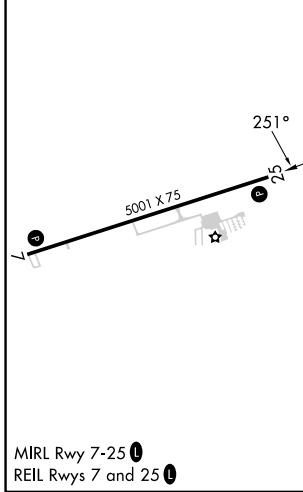
**⚠** Baro-VNAV NA when using Chicago/Rockford Intl altimeter setting. For uncompensated Baro-VNAV systems, LNAV/VNAV NA below -16°C (4°F) or above 54°C (130°F). DME/DME RNP-0.3 NA. When local altimeter setting not received, use Chicago/Rockford Intl altimeter setting: increase LPV DA to 1079 feet and LNAV/VNAV DA to 1152 feet and all MDA 60 feet; increase LNAV/VNAV visibility all Cats and LNAV Cat C/D visibility 1/8 mile; increase Circling Cat C visibility 1/4 mile. Helicopter visibility reduction below 3/4 SM NA. VDP NA when using Chicago/Rockford Intl altimeter setting.

**MISSED APPROACH:**  
Climb to 2600 direct BATBE and hold.

AWOS-3 <b>125.2</b>	ROCKFORD APP CON <b>126.0 327.0</b>	UNICOM <b>122.975 (CTAF)</b> <b>U</b>
------------------------	--	--



ELEV 781	TDZE 781
----------	----------



CATEGORY	A	B	C	D
LPV DA		1031-1	250 (300-1)	
LNAV/VNAV DA		1104-1½	323 (400-1½)	
LNAV MDA	1360-1	579 (600-1)	1360-1½	579 (600-1½)
CIRCLING	1360-1	579 (600-1)	1680-2¾ 899 (900-2¾)	1820-3 1039 (1100-3)

EC-3, 14 MAY 2026 to 11 JUN 2026

EC-3, 14 MAY 2026 to 11 JUN 2026