

WAAS CH <b>78228</b> <b>W07A</b>	APP CRS <b>071°</b>	Rwy Ldg TDZE Apt Elev	<b>5001</b> <b>775</b> <b>781</b>
--	------------------------	-----------------------------	---

# RNAV (GPS) RWY 7

ROCHELLE MUNI/KORITZ FLD (R.P.J)

RNP APCH - GPS.

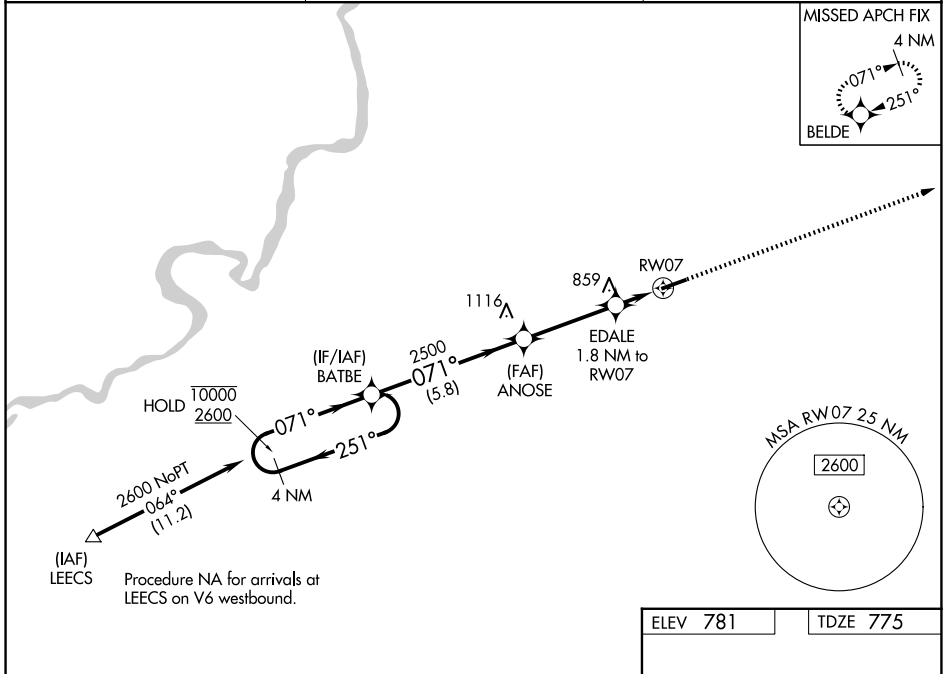
**⚠** Baro-VNAV NA when using Chicago/Rockford Intl altimeter setting. For uncompensated Baro-VNAV systems, procedure NA below -17°C or above 54°C. VDP NA when using Chicago/Rockford Intl altimeter setting. When local altimeter setting not received, use Chicago/Rockford Intl altimeter setting: increase all DA to 1073 feet and all MDA 60 feet; increase LNAV visibility Cats C/D 1/8 mile; increase Circling Cat C visibility 1/4 mile.

MISSED APPROACH:  
Climb to 2600 direct  
BELDE and hold.

AWOS-3  
**125.2**

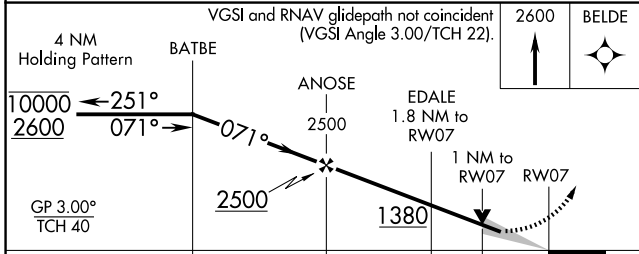
ROCKFORD APP CON  
**126.0 327.0**

UNICOM  
**122.975 (CTAF) 0**



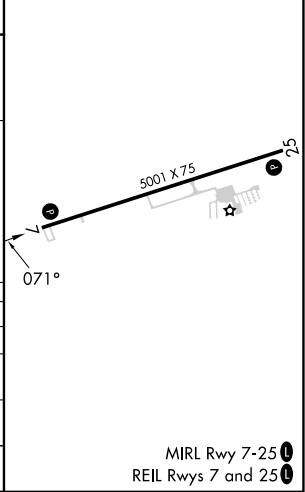
EC-3, 14 MAY 2026 to 11 JUN 2026

EC-3, 14 MAY 2026 to 11 JUN 2026



ELEV 781	TDZE 775
----------	----------

CATEGORY	A	B	C	D
LPV DA		1025-1	250 (300-1)	
LNAV/VNAV DA		1025-1	250 (300-1)	
LNAV MDA		1120-1	345 (400-1)	
CIRCLING	1260-1 479 (500-1)	1360-1 579 (600-1)	1680-2 <sup>3</sup> / <sub>4</sub> 899 (900-2 <sup>3</sup> / <sub>4</sub> )	1820-3 1039 (1100-3)



MIRL Rwy 7-25  
REIL Rws 7 and 25