

LOC I-SOZ 108.7	APP CRS 246°	Rwy Ldg TDZE Apt Elev	5002 2240 2275
---------------------------	------------------------	-----------------------------	---

LOC RWY 25

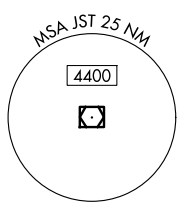
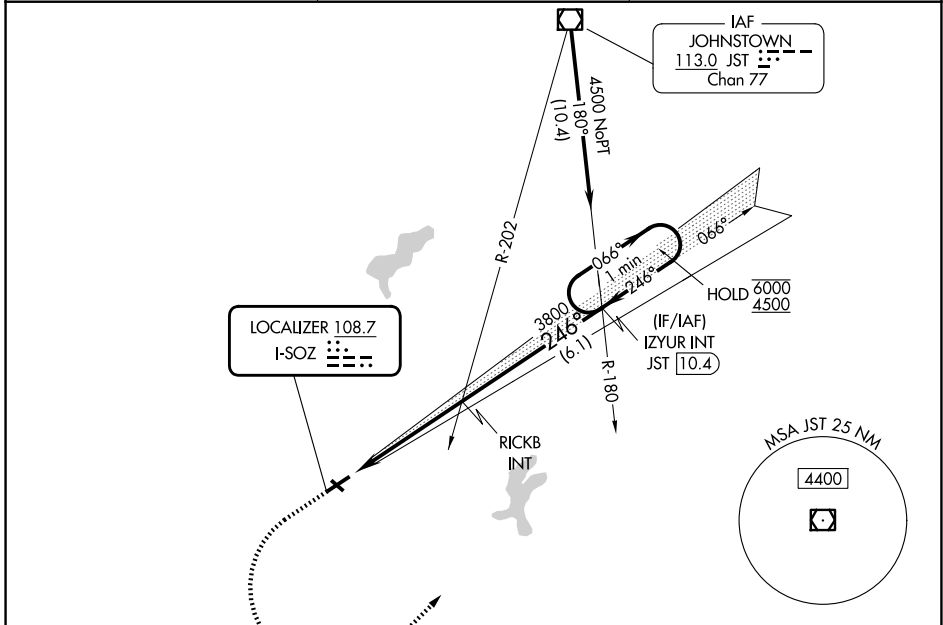
SOMERSET COUNTY (2G9)

DME required.

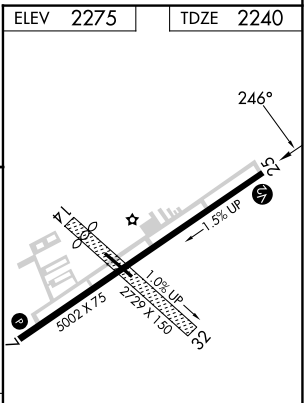
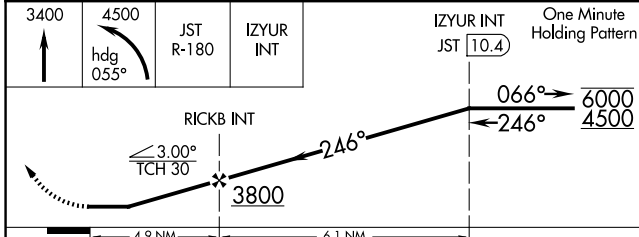
▼ Rwy 25 helicopter visibility reduction below 1 SM NA.
▲ Circling NA to Rwys 14 and 32. Procedure NA at night.

MISSED APPROACH: Climb to 3400 then climbing left turn to 4500 on heading 055° and JST VOR/DME R-180 to IZYUR INT/JST 10.4 DME and hold.

AWOS-3P 133.8	JOHNSTOWN APP CON ★ 121.2 299.2	UNICOM 122.8 (CTAF)
-------------------------	---	-------------------------------



ELEV 2275	TDZE 2240
-----------	-----------



	RICKB INT		IZYUR INT		One Minute Holding Pattern
	3800		6000		4500
	4.9 NM		6.1 NM		
CATEGORY	A	B	C	D	
S-25	2860-1	620 (600-1)	2860-1¾	620 (600-1¾)	
CIRCLING	2860-1 585 (600-1)	2920-1 645 (700-1)	3520-3	1245 (1300-3)	

MIRL Rwy 7-25
 REIL Rwys 7 and 25
 FAF to MAP 4.9 NM

Knots	60	90	120	150	180
Min:Sec	4:54	3:16	2:27	1:58	1:38

NE-4, 14 MAY 2026 to 11 JUN 2026

NE-4, 14 MAY 2026 to 11 JUN 2026