

WAAS CH 82205 W25A	APP CRS 246°	Rwy Ldg TDZE Apt Elev	5002 2240 2275
--	------------------------	-----------------------------	---

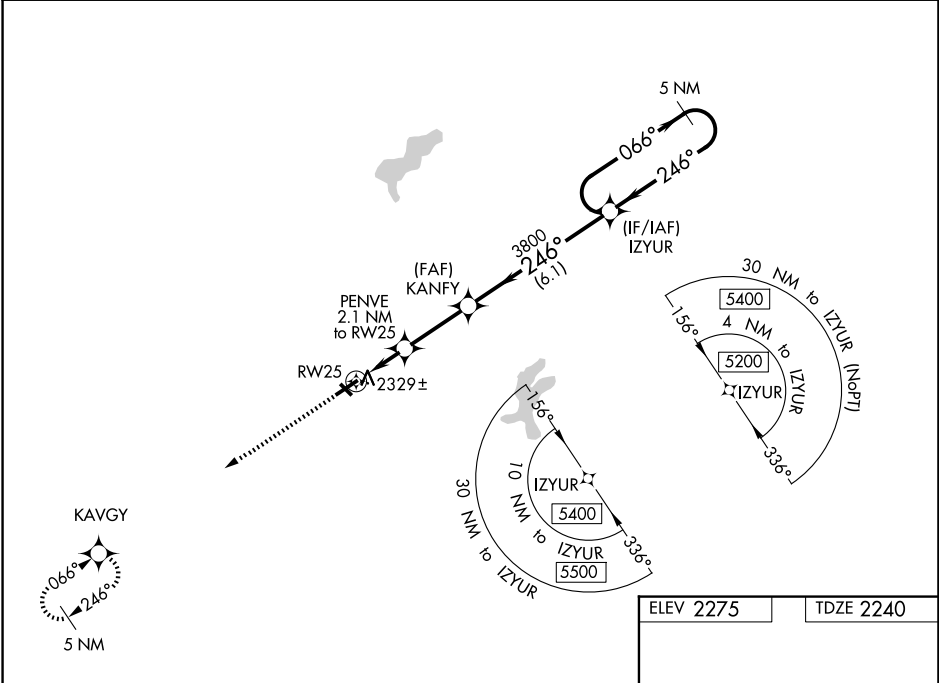
RNAV (GPS) RWY 25

SOMERSET COUNTY (2G9)

⚠ NA Baro-VNAV NA when using Johnstown altimeter setting. For uncompensated Baro-VNAV systems, LNAV/VNAV NA below -19°C (-2°F) or above 53°C (128°F). DME/DME RNP-0.3 NA. Procedure NA at night. Helicopter visibility reduction below 1 SM NA. Circling NA to Rwy 14-32. When local altimeter setting not received, use Johnstown altimeter setting and increase all DA 44 feet and all MDA 60 feet. Increase LPV all Cats and LNAV/VNAV all Cats visibility 1/8 mile and increase LNAV Cat C/D visibility 1/4 mile.

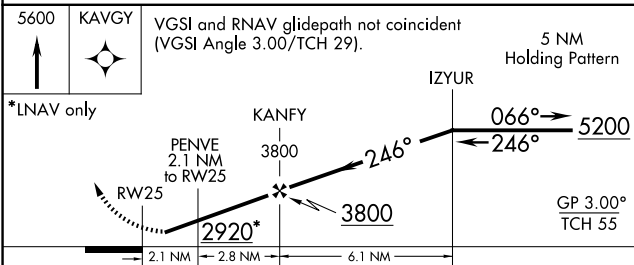
MISSED APPROACH:
Climb to 5600 direct KAVGY and hold.

AWOS-3P 133.8	JOHNSTOWN APP CON ★ 121.2 299.2	UNICOM 122.8 (CTAF) 0
-------------------------	---	---------------------------------

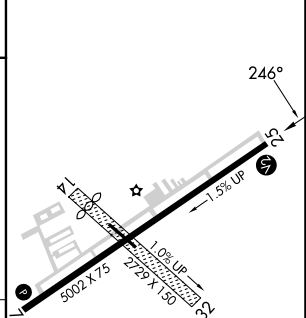


NE-4, 14 MAY 2026 to 11 JUN 2026

NE-4, 14 MAY 2026 to 11 JUN 2026



ELEV 2275	TDZE 2240
-----------	-----------



CATEGORY	A	B	C	D
LPV DA		2490-1	250 (300-1)	
LNAV/VNAV DA		2583-1¼	343 (400-1¼)	
LNAV MDA		2580-1	340 (400-1)	
CIRCLING	2820-1	2920-1	3460-3	3520-3
	545 (600-1)	645 (700-1)	1185 (1200-3)	1245 (1300-3)

MIRL Rwy 7-25
REIL Rws 7 and 25 0