

APP CRS <b>040°</b>	Rwy Ldg <b>3898</b> TDZE <b>799</b> Apt Elev <b>799</b>
------------------------	---

# RNAV (GPS) RWY 4

CAMBRIDGE MUNI (CDI)

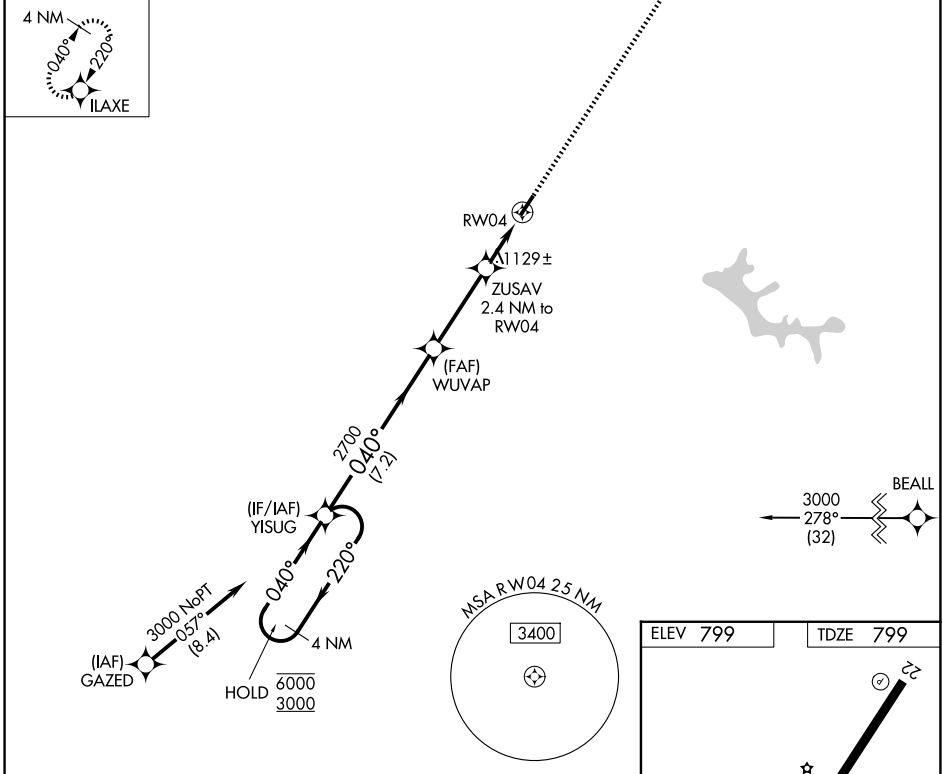
RNP APCH.

**⚠** Rwy 4 helicopter visibility reduction below 1 SM NA. Straight-in and Circling Rwy 4 NA at night.

**MISSED APPROACH:**  
Climb to 3000 direct  
ILAXE and hold.

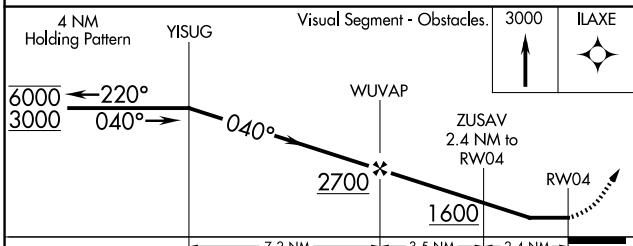
AWOS-3 <b>118.525</b>	(WEST) INDIANAPOLIS CENTER <b>124.45 323.275</b>	(EAST) CLEVELAND CENTER <b>126.95 239.3</b>	UNICOM <b>123.075 (CTAF) 0</b>
--------------------------	---	--	-----------------------------------

MISSED APCH FIX

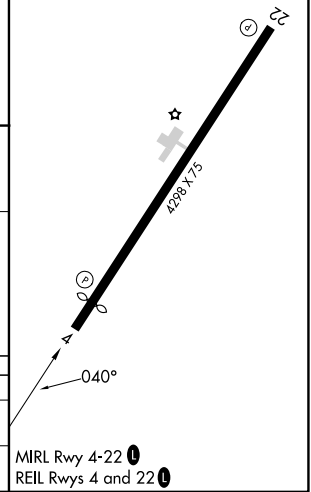


EC-2, 14 MAY 2026 to 11 JUN 2026

EC-2, 14 MAY 2026 to 11 JUN 2026



ELEV 799	TDZE 799
----------	----------



CATEGORY	A	B	C	D
LNAV MDA	1380-1	581 (600-1)	1380-1¼ 581 (600-1¼)	NA
CIRCLING	1460-1 661 (700-1)	1520-1 721 (800-1)	1800-3 1001 (1100-3)	NA