

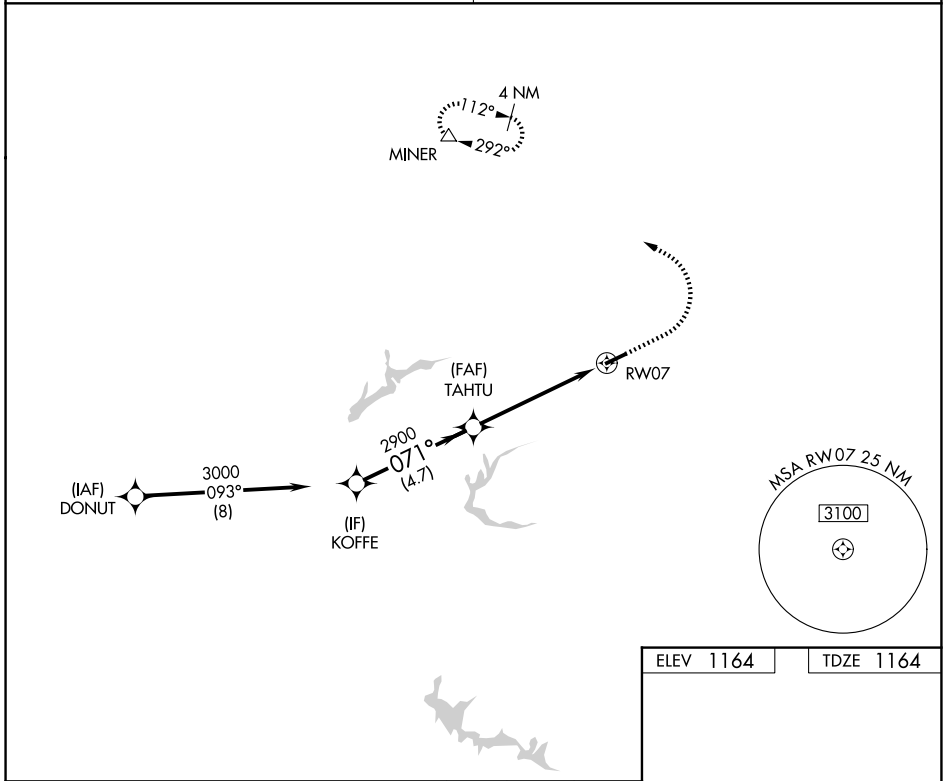
WAAS CH <b>62930</b> <b>W07A</b>	APP CRS <b>071°</b>	Rwy Ldg TDZE <b>1164</b> Apt Elev <b>1164</b>	<b>4300</b>
--	------------------------	---	-------------

# RNAV (GPS) RWY 7

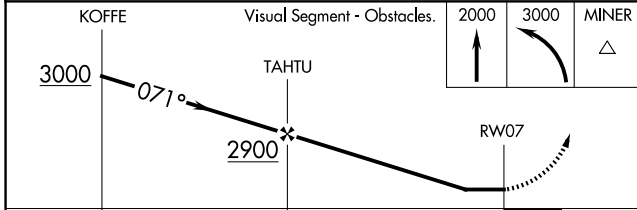
CARROLL COUNTY/TOLSON (T'SO)

RNP APCH.	Procedure NA at night. Use Akron-Canton Rgnl altimeter setting; when not received use New Philadelphia altimeter and increase all MDA 20 feet. Rwy 7 helicopter visibility reduction below 1 SM NA.	MISSED APPROACH: Climb to 2000 then climbing left turn to 3000 direct MINER and hold.
-----------	---	---

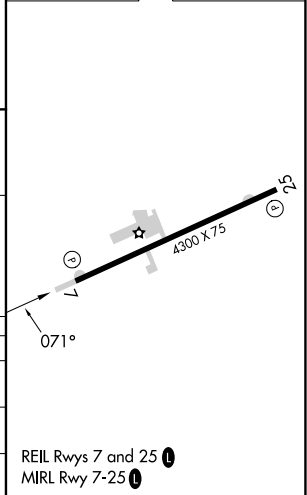
CLEVELAND APP CON★ <b>125.5 371.875</b>	UNICOM <b>122.7 (CTAF) 0</b>
--	---------------------------------



ELEV 1164	TDZE 1164
-----------	-----------



CATEGORY	A		B		C		D	
	LP	MDA	LP	MDA	LP	MDA	LP	MDA
LP	MDA	1760-1	596	(600-1)	NA			
LNAV	MDA	1820-1	656	(700-1)	NA			
CIRCLING		1840-1	676	(700-1)	NA			



EC-2, 14 MAY 2026 to 11 JUN 2026

EC-2, 14 MAY 2026 to 11 JUN 2026