

WAAS CH <b>50405</b> <b>W25A</b>	APP CRS <b>253°</b>	Rwy Ldg TDZE <b>891</b> Apt Elev <b>891</b>	<b>5000</b>
--	------------------------	---	-------------

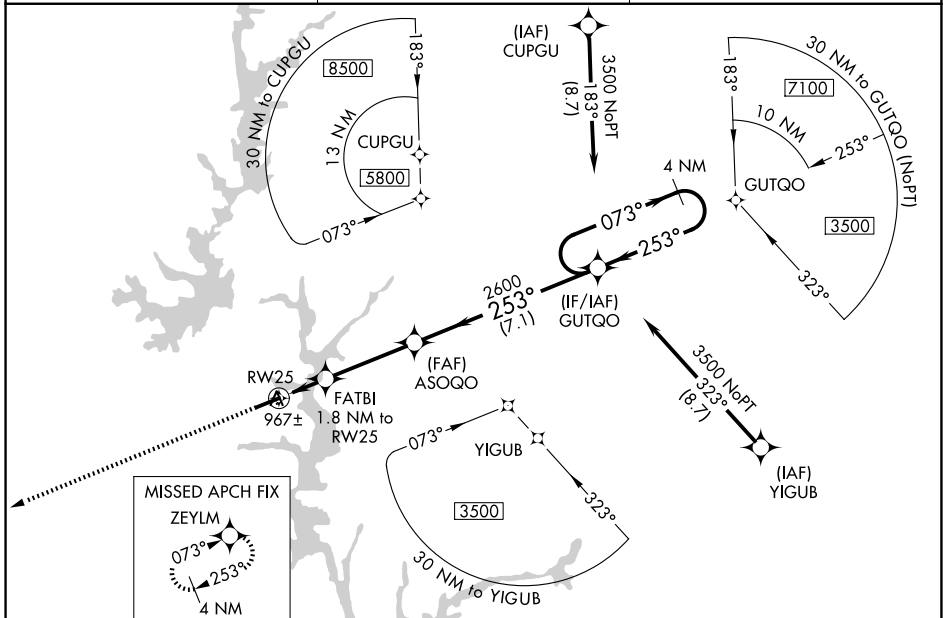
# RNAV (GPS) RWY 25

OCONEE COUNTY RGNL (CEU)

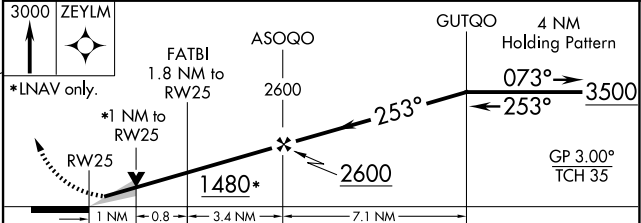
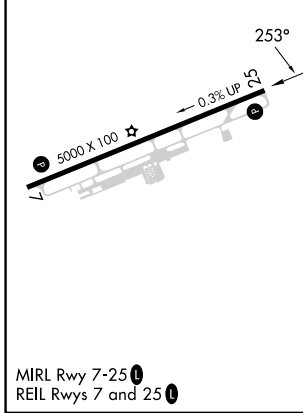
**⚠** For uncompensated Baro-VNAV systems, LNAV/VNAV NA below -6°C (22°F) or above 54°C (130°F). DME/DME RNP-0.3 NA. When local altimeter setting not received, use Anderson altimeter setting and increase all DA 47 feet and all MDA 60 feet; increase LPV all Cats, and LNAV Cat C visibility 1/8 mile; increase LNAV/VNAV all Cats visibility 1/4 mile. Baro-VNAV and VDP NA when using Anderson altimeter setting.

**MISSED APPROACH:** Climb to 3000 direct ZEYLM and hold.

ASOS <b>119.275</b>	GREER APP CON* <b>118.8 270.275</b>	UNICOM <b>122.7 (CTAF) 0</b>
------------------------	--	---------------------------------



ELEV 891	TDZE 891
----------	----------



	A	B	C	D
LPV DA	1091-3/4	200 (200-3/4)		NA
LNAV/VNAV DA	1141-7/8	250 (300-7/8)		NA
LNAV MDA	1220-1	329 (400-1)		NA
CIRCLING	1300-1	1360-1	1640-2 1/4	NA
	409 (500-1)	469 (500-1)	749 (800-2 1/4)	

SE-2, 14 MAY 2026 to 11 JUN 2026

SE-2, 14 MAY 2026 to 11 JUN 2026