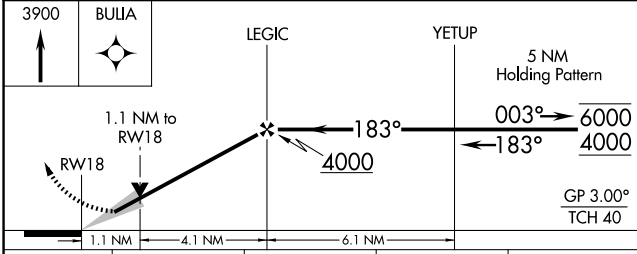
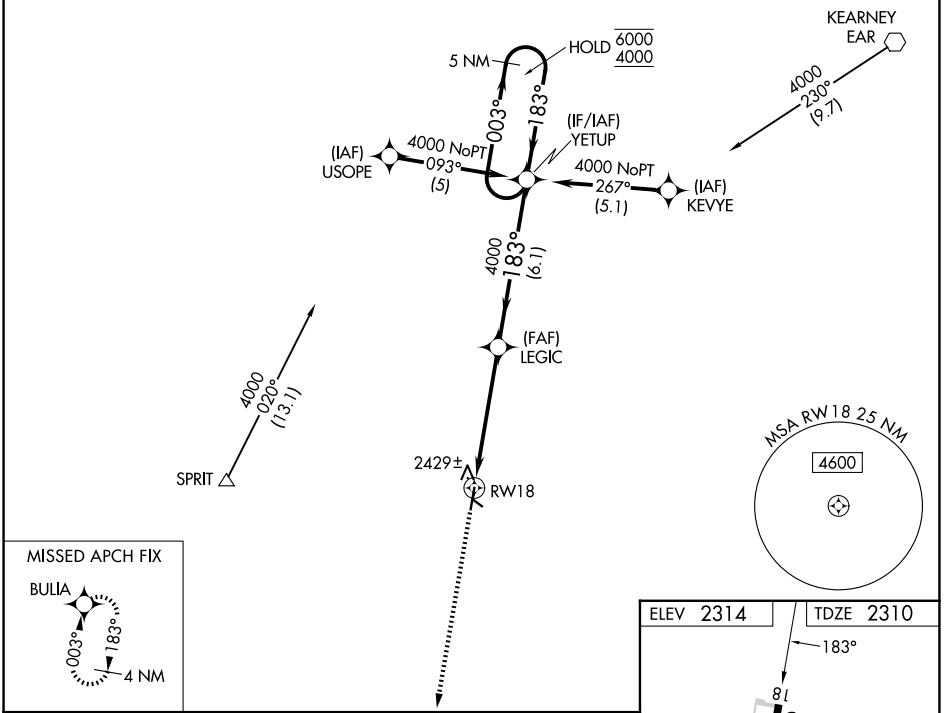


WAAS CH 73002 W18A	APP CRS 183°	Rwy Ldg TDZE Apt Elev	4701 2310 2314
--	------------------------	-----------------------------	---

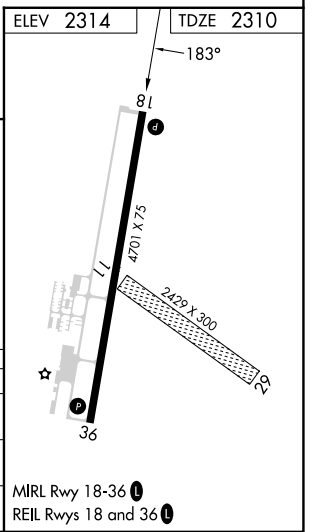
RNAV (GPS) RWY 18

BREWSTER FLD (HDE)

RNP APCH - GPS.		MISSED APPROACH: Climb to 3900 direct BULIA and hold.
<p>⚠ Circling NA to Rwy 11 and 29. VDP NA when using EAR altimeter setting. When local altimeter setting not received, use EAR altimeter setting and increase LPV DA to 2637 feet and all visibilities ¼ SM. Increase all MDAs 80 feet and LNAV visibility Cat C/D ⅜ SM, and Circling visibility Cat C/D ¼ SM.</p>		
AWOS-3 121.325	DENVER CENTER 132.7 226.675	UNICOM 122.8 (CTAF) 0



CATEGORY	A	B	C	D
LPV DA	2560-1 250 (300-1)			
LNAV MDA	2680-1 370 (400-1)			
CIRCLING	2840-1 526 (600-1)	2880-1 566 (600-1)	3020-2 706 (800-2)	3020-2¼ 706 (800-2¼)



NC-2, 14 MAY 2026 to 11 JUN 2026

NC-2, 14 MAY 2026 to 11 JUN 2026