

VOR EAR 111.2	APP CRS 217°	Rwy Ldg TDZE Apt Elev	N/A N/A 2314
-------------------------	------------------------	-----------------------------	---

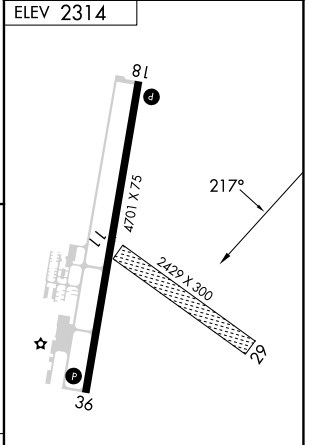
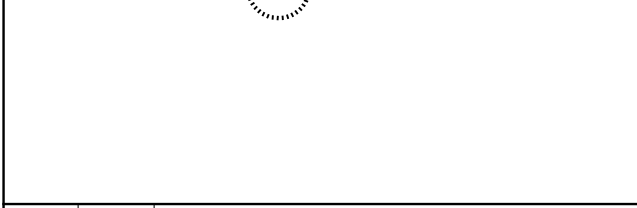
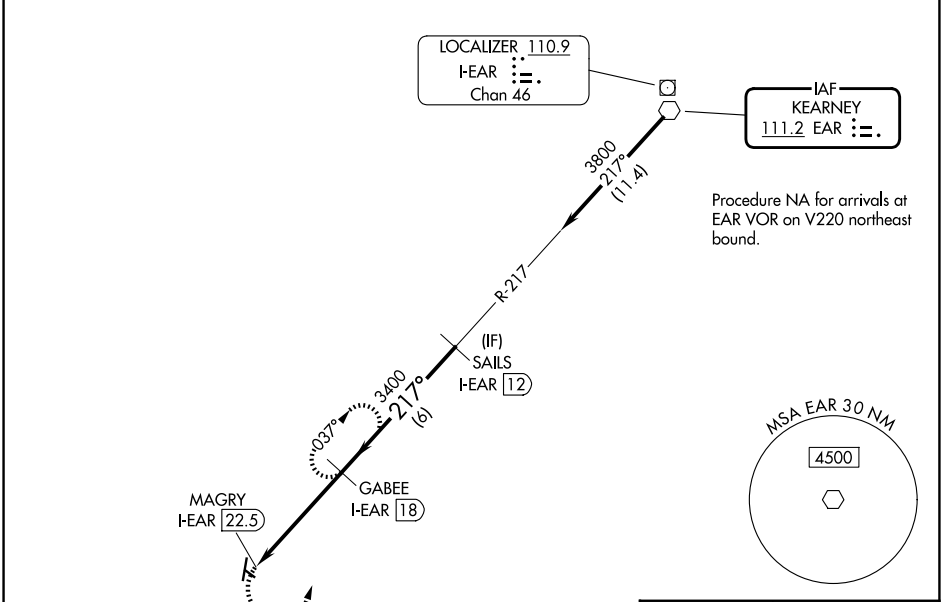
VOR-A
BREWSTER FLD (HDE)

DME required.

▽ Circling NA to Rwys 11 and 29. When local altimeter setting not received, use EAR altimeter setting and increase all MDAs 80 feet, and all visibilities ¼ SM. DME from I-EAR localizer. Simultaneous reception of EAR VOR and I-EAR DME required.

⚠ MISSED APPROACH: Climbing left turn to 3900 on EAR VOR R-217 to GABEE/I-EAR 18 DME and hold, continue climb-in-hold to 3900.

AWOS-3 121.325	DENVER CENTER 132.7 226.675	UNICOM 122.8 (CTAF) 0
--------------------------	---------------------------------------	---------------------------------



3900 EAR R-217	GABEE I-EAR 18	GABEE I-EAR 18	SAILS I-EAR 12
MAGRY I-EAR 22.5	3400	3800	
	4.6 NM	6 NM	

CATEGORY	A	B	C	D
CIRCLING	3100-1	786 (800-1)	3100-2¼ 786 (800-2¼)	3100-2½ 786 (800-2½)

MIRL Rwy 18-36 0
REIL Rwys 18 and 36 0