

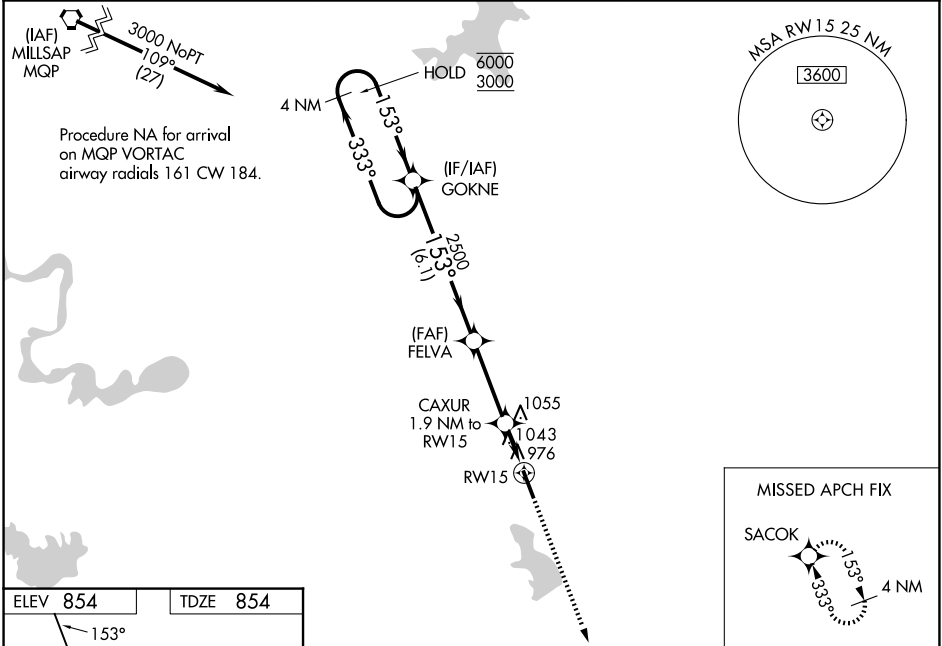
WAAS CH 61331 W15A	APP CRS 153°	Rwy Ldg TDZE Apt Elev	5512 854 854
--	------------------------	-----------------------------	---

RNAV (GPS) RWY 15

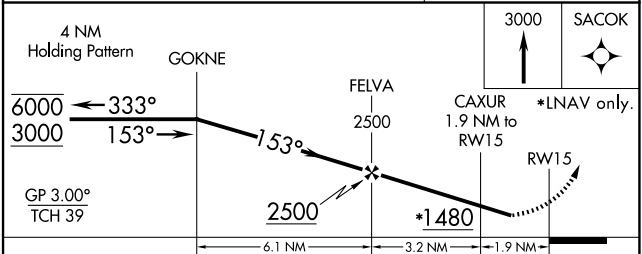
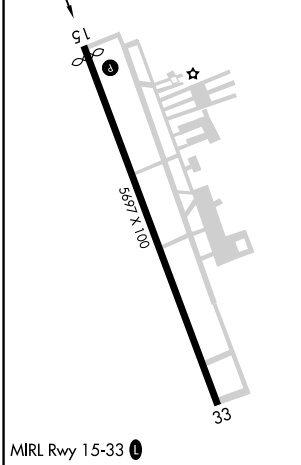
CLEBURNE RGNL (CPT)

RNP APCH.	MISSED APPROACH: Climb to 3000 direct SACOK and hold.
<p>▼ For uncompensated Baro-VNAV systems, LNAV/VNAV NA below -16°C or above 54°C. Rwy 15 helicopter visibility reduction below ¾ SM NA.</p> <p>▲</p>	

AWOS-3 119.525	LONE STAR APP CON 135.975 379.9	UNICOM 122.8 (CTAF) 0
--------------------------	---	---------------------------------



ELEV 854	TDZE 854
-----------------	-----------------



CATEGORY	A	B	C	D
LPV DA		1240-1 ³ / ₈	386 (400-1 ³ / ₈)	
LNAV/VNAV DA		1397-1 ⁷ / ₈	543 (600-1 ⁷ / ₈)	
LNAV MDA	1360-1	506 (600-1)	1360-1 ³ / ₈	506 (600-1 ³ / ₈)
CIRCLING	1400-1	546 (600-1)	1680-2 ¹ / ₂ 826 (900-2 ¹ / ₂)	1700-2 ³ / ₄ 846 (900-2 ³ / ₄)

SC-2, 14 MAY 2026 to 11 JUN 2026

SC-2, 14 MAY 2026 to 11 JUN 2026