

APP CRS	Rwy Idg	<b>5000</b>
<b>121°</b>	TDZE	<b>1086</b>
	Apt Elev	<b>1086</b>

# RNAV (GPS) RWY 12

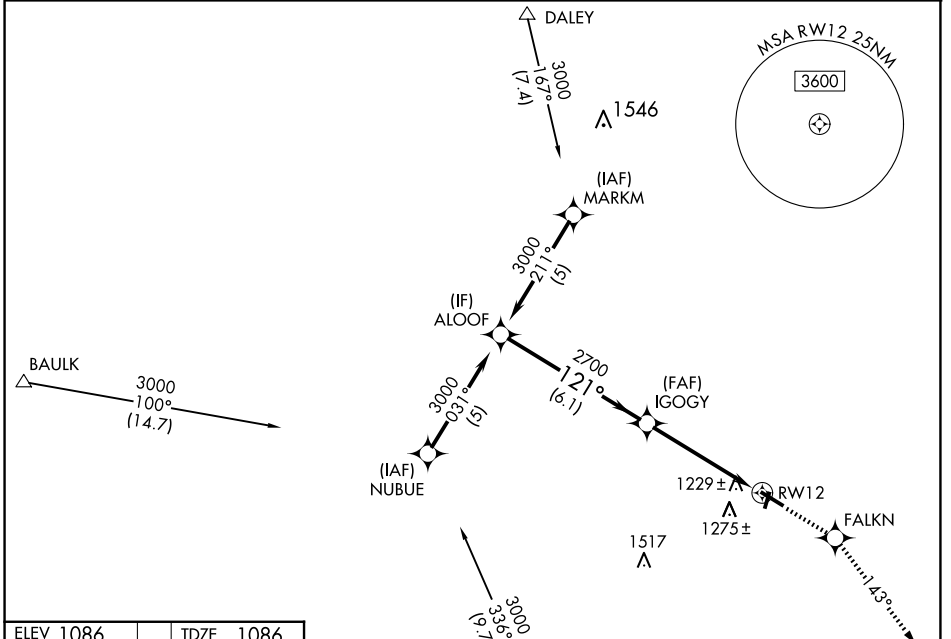
MONROE MUNI (EFT)

RNP APCH-GPS.

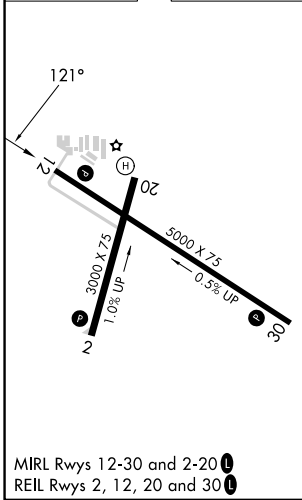
**V** VDP NA when using Altimeter setting. When local altimeter setting not received, use Altimeter altimeter setting and increase all MDA 100 feet, increase LNAV Cat C/D and Circling Cat C visibility ¼ mile. Rwy 12 helicopter visibility reduction below ¾ SM NA. Circling to Rwy 2-20 NA at night.

**MISSED APPROACH:**  
Climb to 3000 direct FALKN and on track 143° to DAVIS and hold.

AWOS-3 <b>118.375</b>	ROCKFORD APP CON <b>126.0 327.0</b>	UNICOM <b>123.05 (CTAF) 0</b>
--------------------------	--	----------------------------------



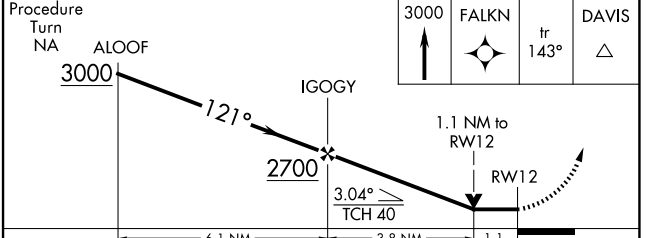
ELEV 1086	TDZE 1086
-----------	-----------



MIRL Rwy 12-30 and 2-20 **0**  
REL Rwy 2, 12, 20 and 30 **0**

MISSED APCH FIX DAVIS

Procedure NA for arrivals at MADDY on V246 westbound.



CATEGORY	A	B	C	D
LNAV MDA	1480-1 394 (400-1)			1480-1¼ 394 (400-1¼)
CIRCLING	1540-1 454 (500-1)	1640-1 554 (600-1)	1640-1½ 554 (600-1½)	1640-2 554 (600-2)

EC-3, 14 MAY 2026 to 11 JUN 2026

EC-3, 14 MAY 2026 to 11 JUN 2026