

VOR/DME JVL 114.3 Chan 90	APP CRS 276°	Rwy Idg 5000 TDZE 1070 Apt Elev 1086
---	------------------------	---

VOR/DME RWY 30

MONROE MUNI (EFT)

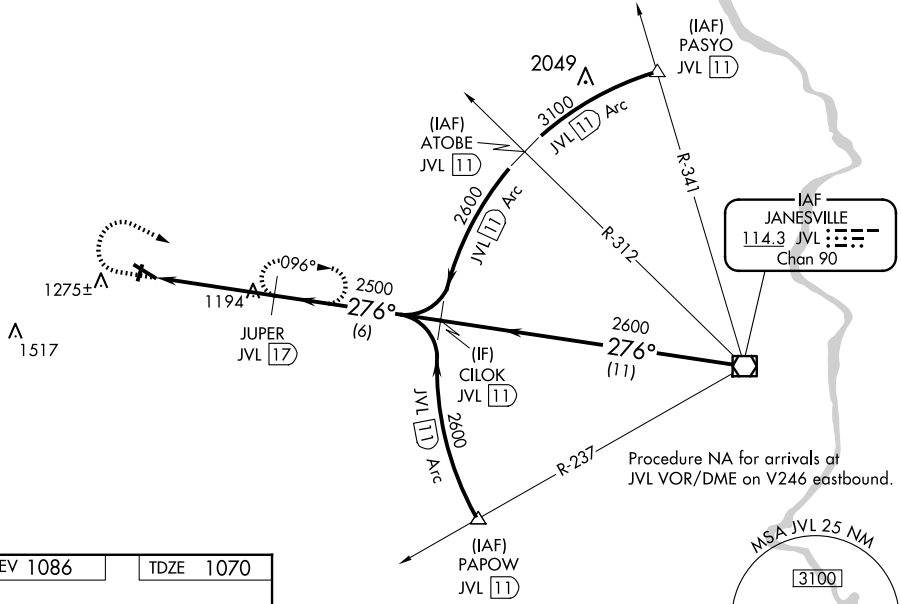
⚠ When local altimeter setting not received, use Altimeter setting and increase all MDA 100 feet, increase Circling Cat C visibility ¼ mile.
⚠ Rwy 30 helicopter visibility reduction below ¾ SM NA. Circling to Rwy 2-20 NA at night.

MISSED APPROACH: Climb to 1800 then climbing right turn to 2600 on JVL VOR/DME R-276 to JUPER/JVL 17 DME and hold.

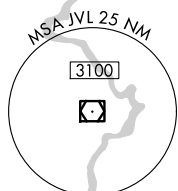
AWOS-3
118.375

ROCKFORD APP CON
126.0 327.0

UNICOM
123.05 (CTAF) 0

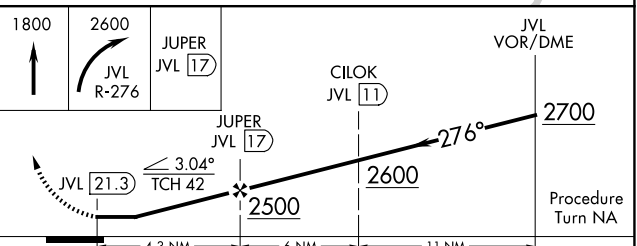


IAF JANESVILLE
114.3 JVL : ---
Chan 90



Procedure NA for arrivals at JVL VOR/DME on V246 eastbound.

ELEV 1086	TDZE 1070
-----------	-----------



CATEGORY	A	B	C	D
S-30	1460-1 390 (400-1)	1460-1¼ 390 (400-1¼)	1460-1½ 390 (400-1½)	1460-1¾ 390 (400-1¾)
CIRCLING	1540-1 454 (500-1)	1640-1 554 (600-1)	1640-1½ 554 (600-1½)	1640-2 554 (600-2)

EC-3, 14 MAY 2026 to 11 JUN 2026

EC-3, 14 MAY 2026 to 11 JUN 2026