

VORTAC RSG 114.55 Chan 92(Y)	APP CRS 111°	Rwy Ldg TDZE Apt Elev 3772 2372 2372
--	------------------------	--

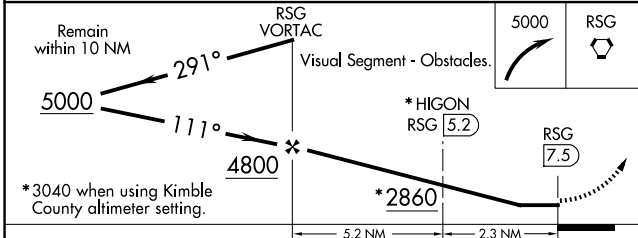
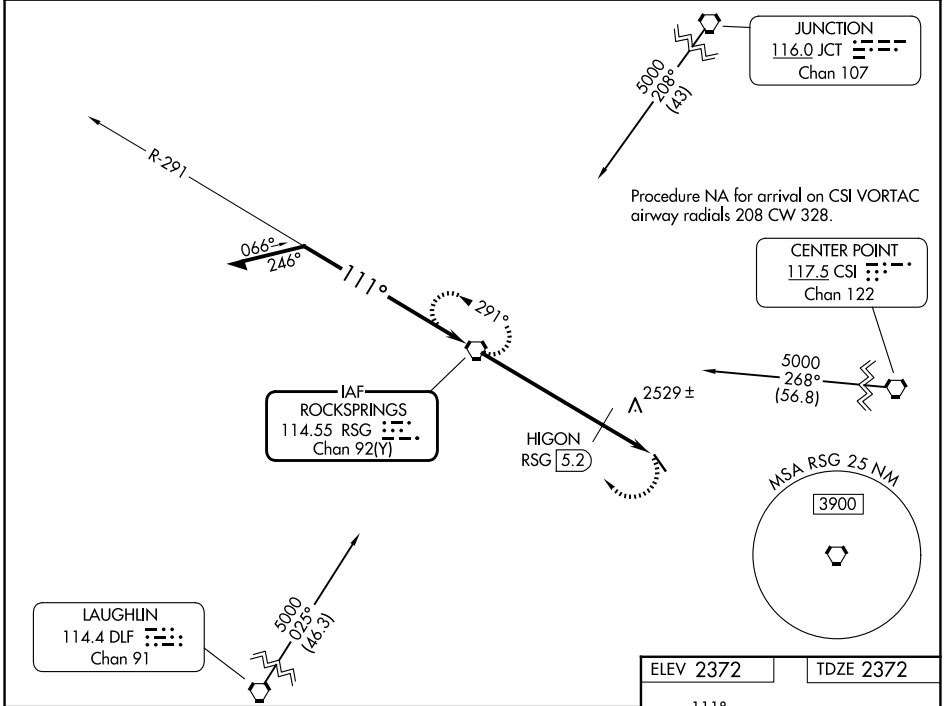
VOR RWY 14

EDWARDS COUNTY (ECU)

⚠ When local altimeter setting not received, use Kimble County altimeter setting and increase all MDA's 180 feet. Procedure NA at night.
⚠ Rwy 14 helicopter visibility reduction below 1 SM NA.

MISSED APPROACH: Climbing right turn to 5000 direct RSG VORTAC and hold, continue climb-in-hold to 5000.

AWOS-3 118.175	DEL RIO APP CON * 119.6 259.1	CTAF 122.9
--------------------------	---	----------------------



ELEV 2372	TDZE 2372
MIRL Rwy 14-32	
FAF to FAF 7.5 NM	
Knots	60 90 120 150 180
Min:Sec	7:30 5:00 3:45 3:00 2:30

CATEGORY	A	B	C	D
S-14	2860-1	488 (500-1)	2860-1¼ 488 (500-1¼)	NA
CIRCLING	2860-1	488 (500-1)	2860-1½ 488 (500-1½)	NA
HIGON FIX MINIMUMS				
S-14	2780-1	408 (500-1)	2780-1¼ 408 (500-1¼)	NA
CIRCLING	2800-1 428 (500-1)	2840-1 468 (500-1)	2840-1½ 468 (500-1½)	NA

SC-3, 14 MAY 2026 to 11 JUN 2026

SC-3, 14 MAY 2026 to 11 JUN 2026