

APP CRS	Rwy Ldg	<b>5000</b>
<b>359°</b>	TDZE	<b>1321</b>
	Apt Elev	<b>1321</b>

# RNAV (GPS) RWY 36

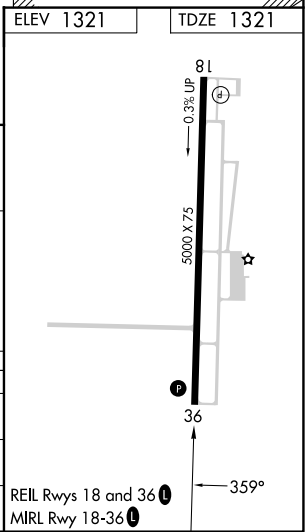
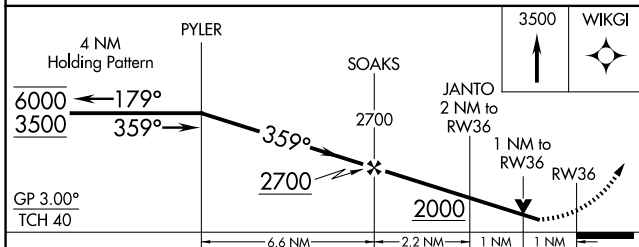
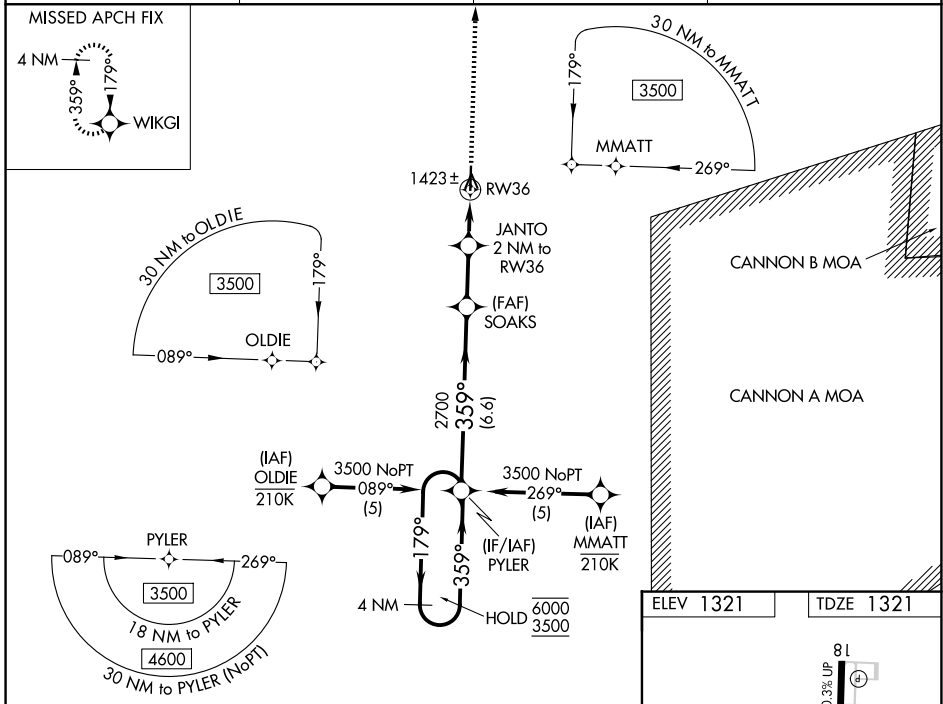
FLOYD W JONES LEBANON (LBO)

RNP APCH - GPS.

Baro-VNAV and VDP NA when using OZS altimeter setting. For uncompensated Baro-VNAV systems, LNAV/VNAV NA below -17°C or above 54°C. Rwy 36 helicopter visibility reduction below ¼ SM NA. When local altimeter setting not received, use OZS altimeter setting: increase LNAV/VNAV DA to 1675 feet; increase all MDAs 100 feet and LNAV visibility Cats C and D ¾ SM, and Circling visibility Cats C and D ½ SM.

MISSED APPROACH: Climb to 3500 direct WIKGI and hold.

AWOS-3PT <b>118.975</b>	SPRINGFIELD APP CON <b>121.1 290.5</b>	CLNC DEL <b>123.725</b>	UNICOM <b>122.8 (CTAF)</b>
----------------------------	---	----------------------------	-------------------------------



CATEGORY	A	B	C	D
LNAV/VNAV DA	1592-1		271 (300-1)	
LNAV MDA	1680-1		359 (400-1)	
CIRCLING	1780-1 459 (500-1)	1860-1 539 (600-1)	1980-1¾ 659 (700-1¾)	1980-2 659 (700-2)

NC-3, 14 MAY 2026 to 11 JUN 2026

NC-3, 14 MAY 2026 to 11 JUN 2026