

WAAS CH 60941 W23A	APP CRS 227°	Rwy Ldg TDZE Apt Elev	5003 799 800
--	------------------------	-----------------------------	---

RNAV (GPS) RWY 23

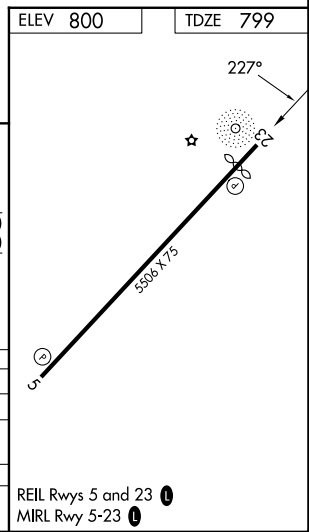
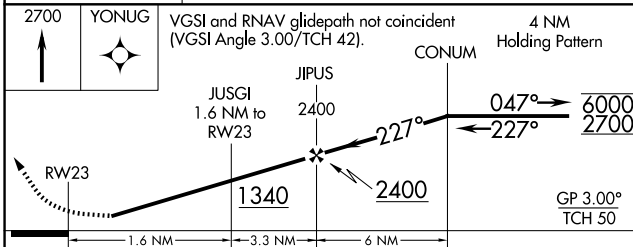
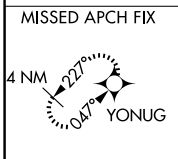
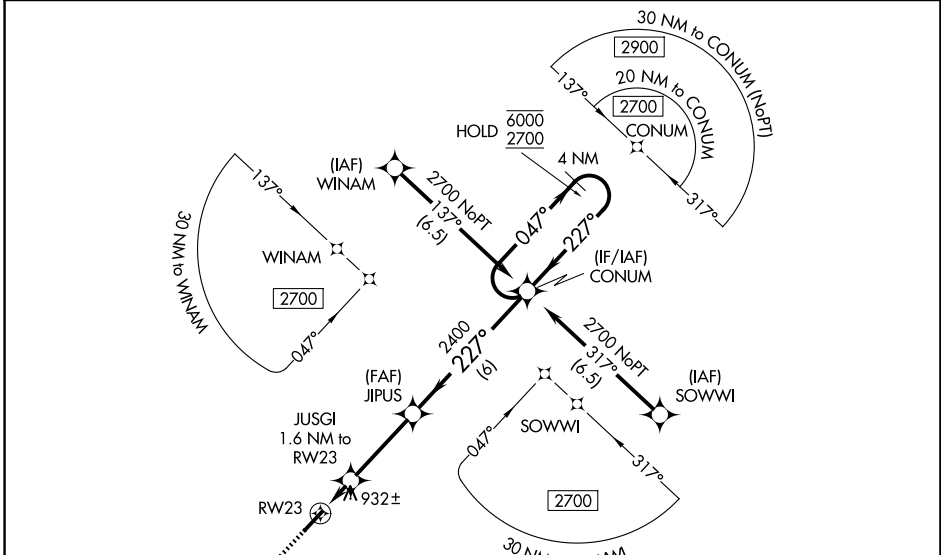
CRAWFORDSVILLE RGNL (CFJ)

RNP APCH - GPS.

▼ Rwy 23 helicopter visibility reduction below $\frac{3}{4}$ SM NA. For uncompensated Baro-VNAV systems, LNAV/VNAV NA below -16°C or above 54°C . Baro-VNAV NA when using GPC altimeter setting. When local altimeter setting not received, use GPC altimeter setting: increase LPV DA to 1111 feet, LNAV/VNAV DA to 1252 feet and all visibilities $\frac{1}{4}$ SM; increase all MDAs 60 feet and LNAV and Circling Cats C and D visibilities $\frac{1}{4}$ SM.

▲ MISSED APPROACH: Climb to 2700 direct YONUG and hold.

AWOS-3PT 125.65	INDIANAPOLIS APP CON 119.05 317.8	UNICOM 122.8 (CTAF) ①
---------------------------	---	--



CATEGORY	A	B	C	D
LPV DA		1059-1	260 (300-1)	
LNAV/VNAV DA		1200-1½	401 (400-1½)	
LNAV MDA	1200-1	401 (400-1)	1200-1½	401 (400-1½)
CIRCLING	1240-1 440 (500-1)	1260-1 460 (500-1)	1440-1¾ 640 (700-1¾)	1520-2¼ 720 (800-2¼)

REIL Rwy 5 and 23 ①
MIRL Rwy 5-23 ①

EC-2, 14 MAY 2026 to 11 JUN 2026

EC-2, 14 MAY 2026 to 11 JUN 2026