

WAAS CH 82739 W05A	APP CRS 047°	Rwy Ldg TDZE 797 Apt Elev 800	5506 797 800
--	------------------------	---	---

RNAV (GPS) RWY 5

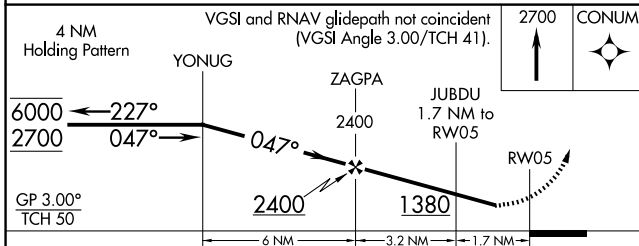
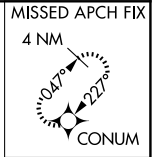
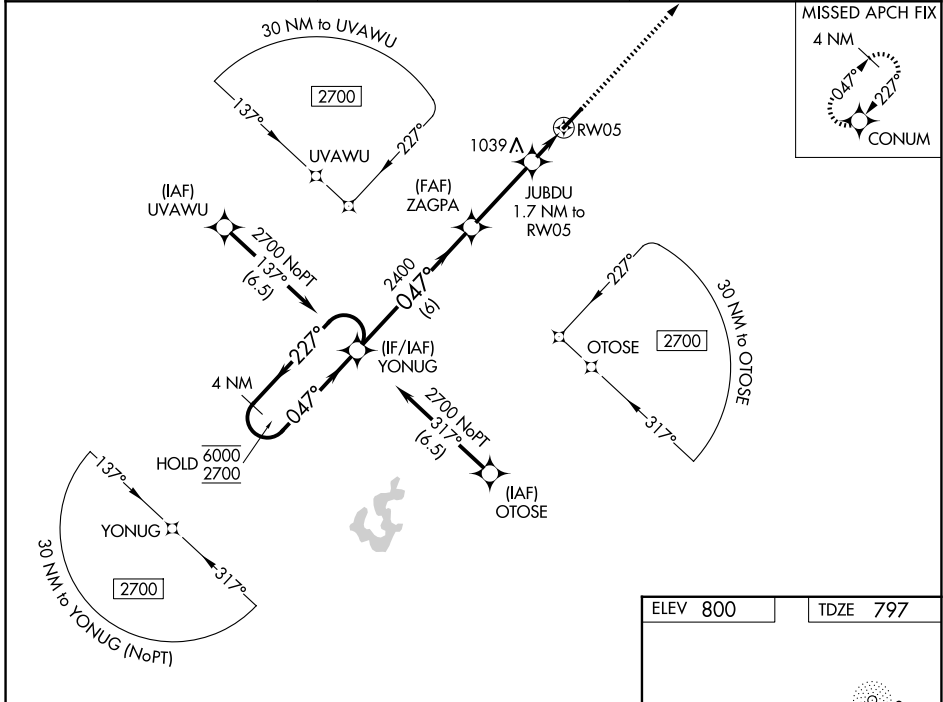
CRAWFORDSVILLE RGNL (CFJ)

RNP APCH - GPS.

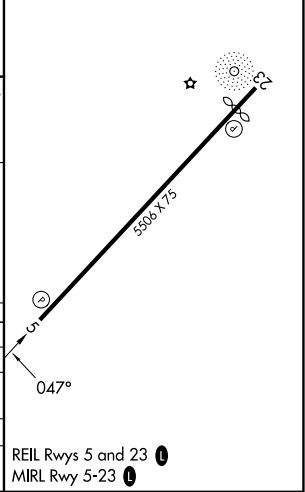
▼ Rwy 5 helicopter visibility reduction below 3/4 SM NA. For uncompensated Baro-VNAV systems, LNAV/VNAV NA below -16°C or above 54°C. Baro-VNAV NA when using GPC altimeter setting. When local altimeter setting not received, use GPC altimeter setting: increase LPV DA to 1128 feet; LNAV/VNAV DA to 1248 feet and all visibilities 1/4 SM; increase all MDAs 60 feet and Circling Cats C and D visibilities 1/4 SM.

▲ MISSED APPROACH: Climb to 2700 direct CONUM and hold.

AWOS-3PT 125.65	INDIANAPOLIS APP CON 119.05 317.8	UNICOM 122.8 (CTAF) 0
---------------------------	---	---------------------------------



ELEV 800	TDZE 797
----------	----------



CATEGORY	A	B	C	D
LPV DA	1076-1		279 (300-1)	
LNAV/VNAV DA	1196-1 1/8		399 (400-1 1/8)	
LNAV MDA	1240-1	443 (500-1)	1240-1 3/8	443 (500-1 3/8)
CIRCLING	1240-1 440 (500-1)	1260-1 460 (500-1)	1440-1 3/4 640 (700-1 3/4)	1520-2 1/4 720 (800-2 1/4)

REIL Rwys 5 and 23 0
MIRL Rwy 5-23 0

EC-2, 14 MAY 2026 to 11 JUN 2026

EC-2, 14 MAY 2026 to 11 JUN 2026