

WAAS CH 62832 W31A	APP CRS 305°	Rwy Ldg TDZE Apt Elev	5152 350 358
--	------------------------	-----------------------------	---

RNAV (GPS) RWY 31

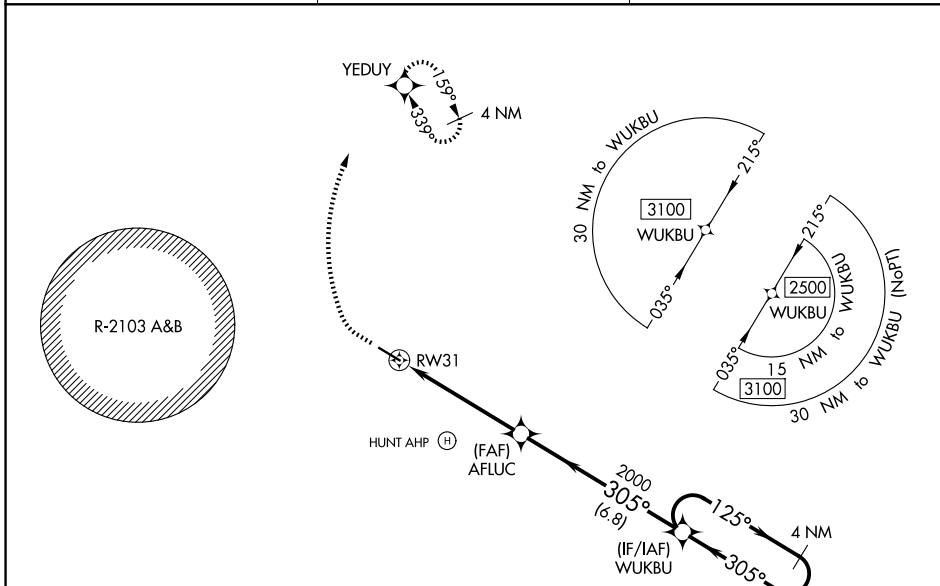
OZARK/BLACKWELL FLD (71J)

RNP APCH.

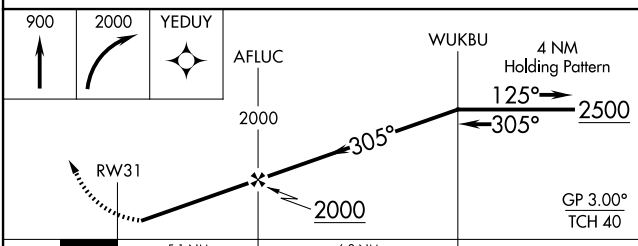
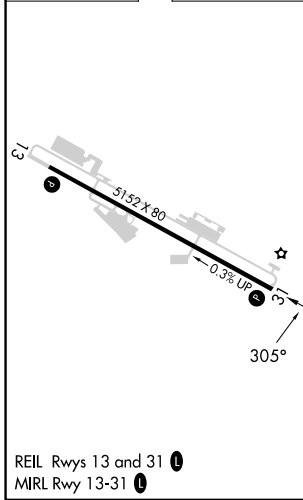
▼ Baro-VNAV NA. Use Dothan altimeter setting; when not received, use Cairns AAF (Fort Rucker) altimeter setting.
▲ NA Rwy 31 helicopter visibility reduction below $\frac{3}{4}$ SM NA. Circling Rwy 13, 31 NA at night.

MISSED APPROACH: Climb to 900 then climbing right turn to 2000 direct YEDUY and hold.

DHN ASOS 135.725	CAIRNS APP CON ★ 125.4 327.125	UNICOM 122.7 (CTAF) 0
----------------------------	--	---------------------------------



ELEV	358	TDZE	350
------	-----	------	-----



CATEGORY	A	B	C	D
LPV DA	661-1 310 (400-1)			NA
LNAV/VNAV DA	851-1 $\frac{3}{4}$ 501 (500-1 $\frac{3}{4}$)			NA
LNAV MDA	860-1	510 (600-1)	860-1 $\frac{3}{8}$ 510 (600-1 $\frac{3}{8}$)	NA
CIRCLING	900-1 542 (600-1)	1100-1 $\frac{3}{4}$ 742 (800-1 $\frac{3}{4}$)	1100-2 $\frac{1}{4}$ 742 (800-2 $\frac{1}{4}$)	NA

SE-4, 14 MAY 2026 to 11 JUN 2026

SE-4, 14 MAY 2026 to 11 JUN 2026