

CSHEL EIGHT DEPARTURE (RNAV)

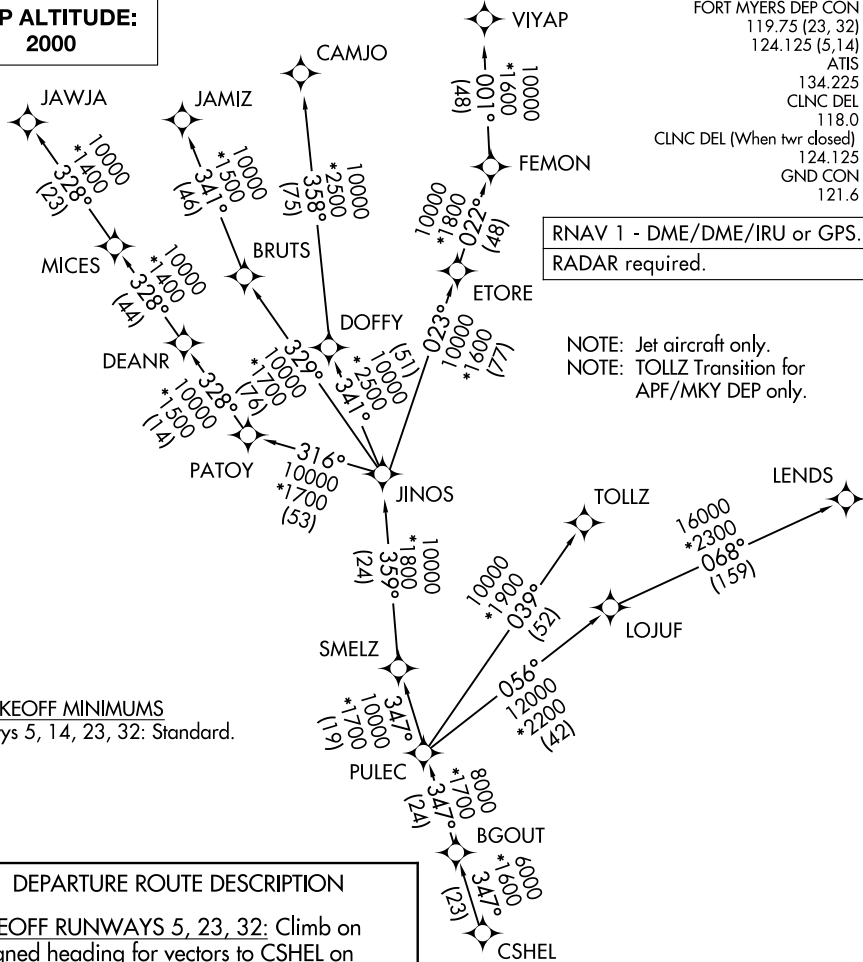
**TOP ALTITUDE:
2000**

FORT MYERS DEP CON *
119.75 (23, 32)
124.125 (5, 14)
ATIS
134.225
CLNC DEL
118.0
CLNC DEL (When twr closed)
124.125
GND CON
121.6

RNAV 1 - DME/DME/IRU or GPS.
RADAR required.

NOTE: Jet aircraft only.
NOTE: TOLLZ Transition for
APF/MKY DEP only.

TAKEOFF MINIMUMS
Rwys 5, 14, 23, 32: Standard.



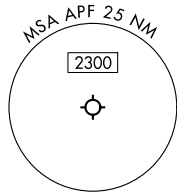
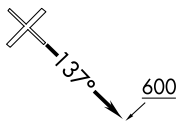
DEPARTURE ROUTE DESCRIPTION

TAKEOFF RUNWAYS 5, 23, 32: Climb on assigned heading for vectors to CSHEL on assigned transition. Maintain 2000. Expect filed altitude 10 minutes after departure.

TAKEOFF RUNWAY 14: Climb on heading 137° to 600 for vectors to CSHEL, thence. . .

. . . on assigned transition. Maintain 2000. Expect filed altitude 10 minutes after departure.

- CAMJO TRANSITION (CSHEL8.CAMJO)
- JAMIZ TRANSITION (CSHEL8.JAMIZ)
- JAWJA TRANSITION (CSHEL8.JAWJA)
- LENDZ TRANSITION (CSHEL8.LENDZ)
- TOLLZ TRANSITION (CSHEL8.TOLLZ)
- VIYAP TRANSITION (CSHEL8.VIYAP)



NOTE: Chart not to scale.

CSHEL EIGHT DEPARTURE (RNAV)

SE-3, 14 MAY 2026 to 11 JUN 2026

SE-3, 14 MAY 2026 to 11 JUN 2026